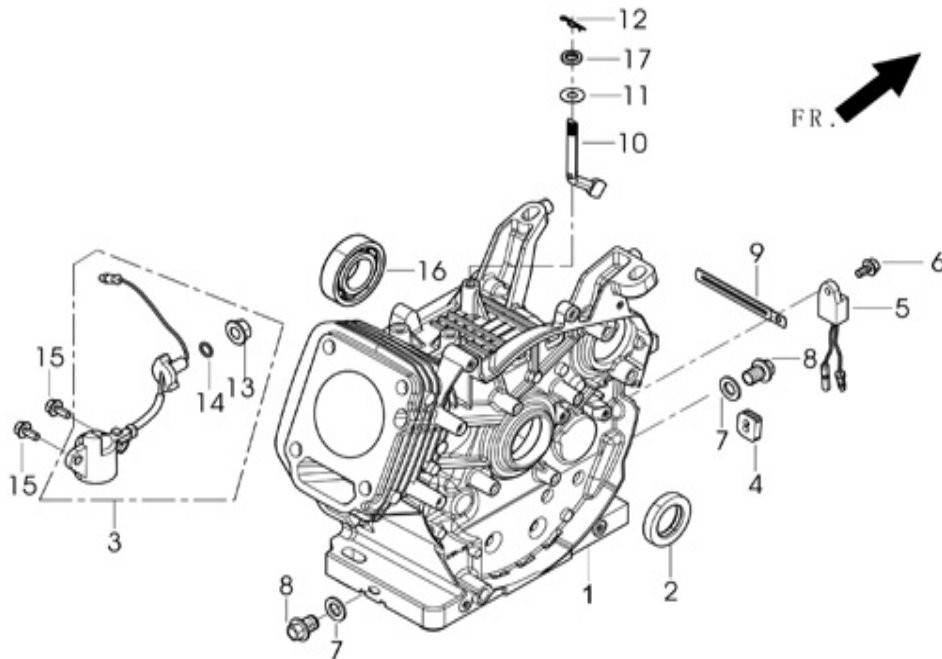


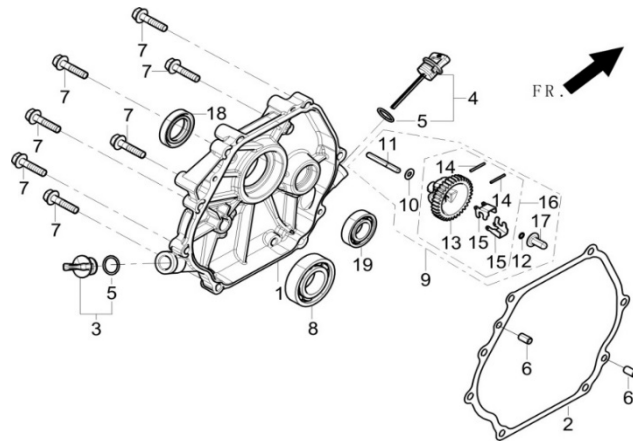
# ROGS-190

## FIG.1 CRANKCASE.



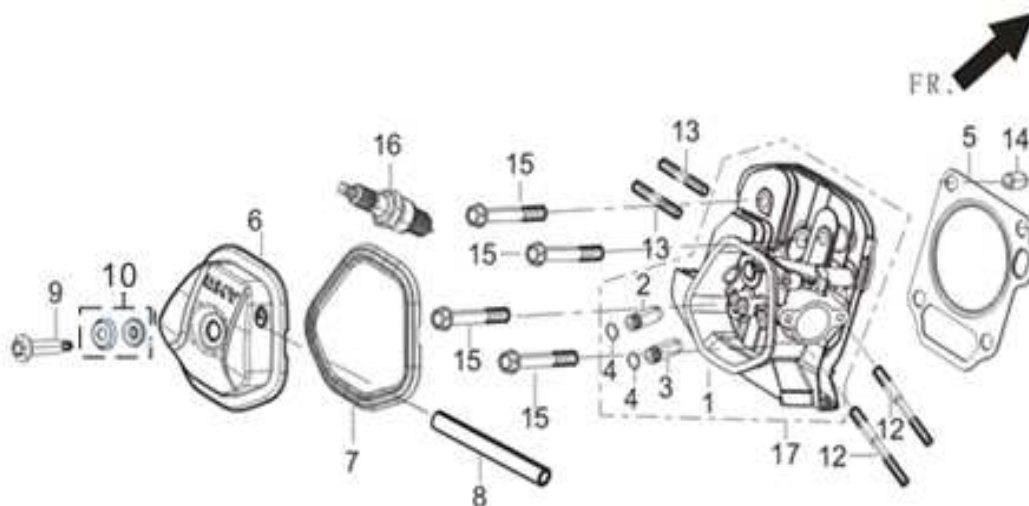
REF.NO.	PART NO	DESCRIPTION	Q'TY
E01-1	11310-Z190710-0BA0	CRANKCASE SUBASSEMBLY.	1
E01-2	90682-Z310110-00A0	SEAL, OIL	1
E01-3	37060-Z080120-00A0	SENSOR, ENGINE OIL	1
E01-4	28101-Z080110-00A0	PLUG, RUBBER	1
E01-5	37050-Z010210-00A0	PROTECTOR, OIL	1
E01-6	90001-0612-01A0	BOLT	1
E01-7	90412-Z080110-00A0	WASHER, FLAT	2
E01-8	11007-Z080110-00A0	BOLT, DRAIN PLUG	2
E01-9	90684-Z030120-00A0	CLIP	1
E01-10	16061-Z100110-00A0	ARM, GOVERNOR	1
E01-11	90412-Z080210-00A0	WASHER, FLAT	1
E01-12	90501-Z010110-00A0	PIN	1
E01-13	90305-Z010210-01A0	NUT	1
E01-15	90001-0616-01A0	BOLT	2
E01-16	90548-0202-CLA0	BEARIN, DEEP GROOVE BALL	1
E01-17	90682-Z100210-00A0	SEAL, OIL	1

## FIG.2 COVER SUBASSEMBLY, CRANKCASE / GEAR ASSY, GOVERNO



REF.NO.	PART NO	DESCRIPTION	Q'TY
E02-1	11411-Z100710-0BA0	COVER, CRANKCASE	1
E02-2	11001-Z100120-00A0	GASKET, CRANKCASE	1
E02-3	15030-Z080130-Q5A0	PLUG SUBASSEMBLY, ENGINE OIL	1
E02-4	15010-Z080130-Q5A0	DIPSTICK SUBASSEMBLY, OIL	1
E02-6	90502-0812-00A0	PIN	2
E02-7	90001-0840-01A0	BOLT	7
E02-8	90548-0207-CLAO	BEARIN, DEEP GROOVE BALL	1
E02-9	16400-Z100110-00A9	GEAR ASSY, GOVERNOR	1
E02-18	90682-Z310110-00A0	SEAL, OIL	1
E02-19	90548-0202-CLAO	BEARIN, DEEP GROOVE BALL	1

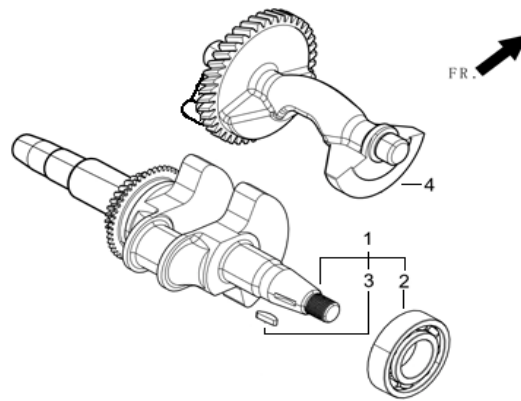
**FIG.3 HEAD SUBASSEMBLY, CYLINDER / PLUG, SPARK**



REF.NO.	PART NO	DESCRIPTION	Q'TY
E03-5	12131-Z190410-00A0	GASKET, CYLINDER HEAD	1

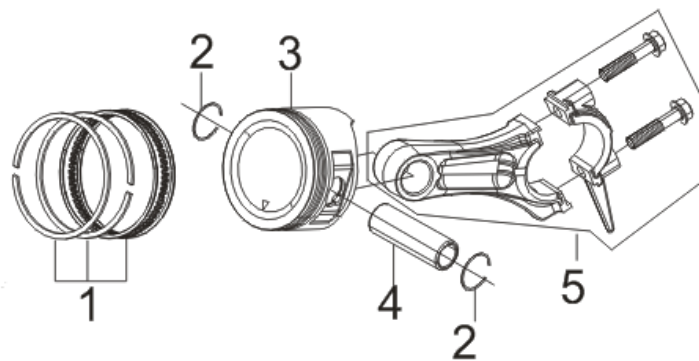
E03-6	12410-Z310110-00A0	COVER SUBASSEMBLY, CYLINDER HEAD	1
E03-7	12004-Z080110-00A0	GASKET, CYLINDER HEAD COVER	1
E03-8	17004-Z080110-00A0	TUBE, BREATHER	1
E03-9	12032-Z080110-01A0	BOLT, CYLINDER HEAD	1
E03-10	12034-Z080110-00A9		1
E03-12	90204-Z100110-01A0	BOLT	2
E03-13	90203-Z010110-01A0	BOLT	2
E03-14	90502-1220-00A0	PIN	2
E03-15	12003-Z080110-00A0	BOLT, CYLINDER HEAD	4
E03-16	30010-Z010210-00A0	PLUG, SPARK	1
E03-17	12140-Z190150-0BA9	HEAD SUBASSEMBLY, CYLINDER	1

### FIG.4 ROD,CRANKSHAFT CONNETING



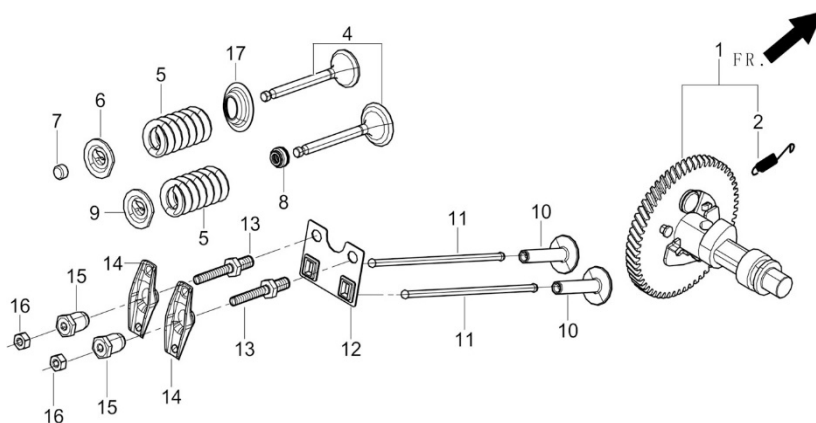
REF.NO.	PART NO	DESCRIPTION	Q'TY
E04-1	13300-Z191310-CLAT	CRANKSHAFT ASSY.	1
E04-4	13400-Z190320-00A0	SHAFT ASSY, BALANCING	1

### FIG.5 RING SET,OIL / ROD,CRANKSHAFT CONNETING



REF.NO. 序号	PART NO 物料代码	DESCRIPTION 英文名	Q'TY 数量
E05-1	13200-Z190210-00A9	RING ASSY, PISTON	1
E05-2	13122-Z100110-00A0	CLIP, PISTON PIN	2
E05-3	13111-Z190310-00A9	PISTON	1
E05-4	13121-Z100110-00A0	PIN, PISTON	1
E05-5	13010-Z190120-00A0	ROD, CONNECTING	1

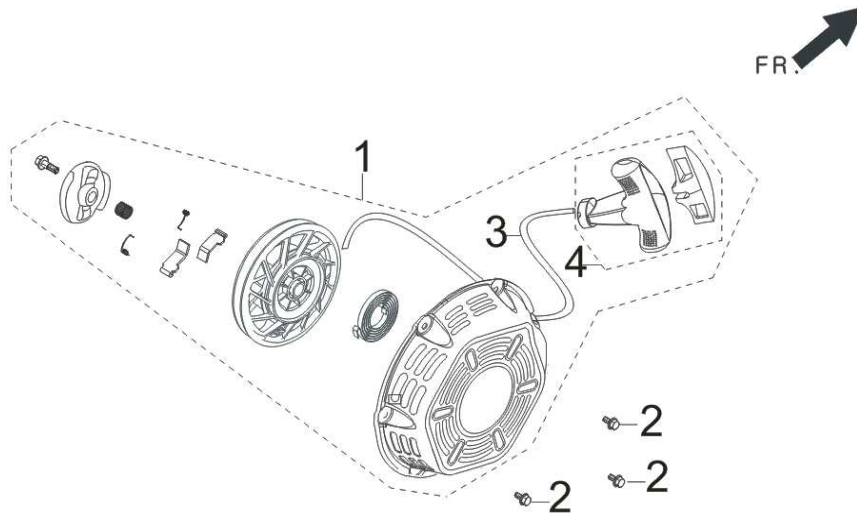
**FIG.6 TRAIN, VALVE / CAMSHAFT SUBASSEMBLY**



REF.NO.	PART NO	DESCRIPTION	Q'TY
E06-1	14200-Z190620-00A9	CAMSHAFT ASSY.	1
E06-4	12110-Z190110-00A9	VALVES SET	1
E06-5	12103-Z080110-00A0	SPRING, VALVE	2
E06-6	12107-Z080110-00A0	RETAINER, EXHAUST VALVE	1
E06-7	12104-Z080110-00A0	ROTATOR, VALVE	1
E06-8	12101-Z080110-00A0	GUIDE, SEAL	1
E06-9	12112-Z080110-00A0	SEAT, VALVE SPRING	1
E06-10	14081-Z080110-00A0	TAPPET, VALVE	2
E06-11	14070-Z100110-00A0	LIFTER SUBASSEMBLY, VALVE	2

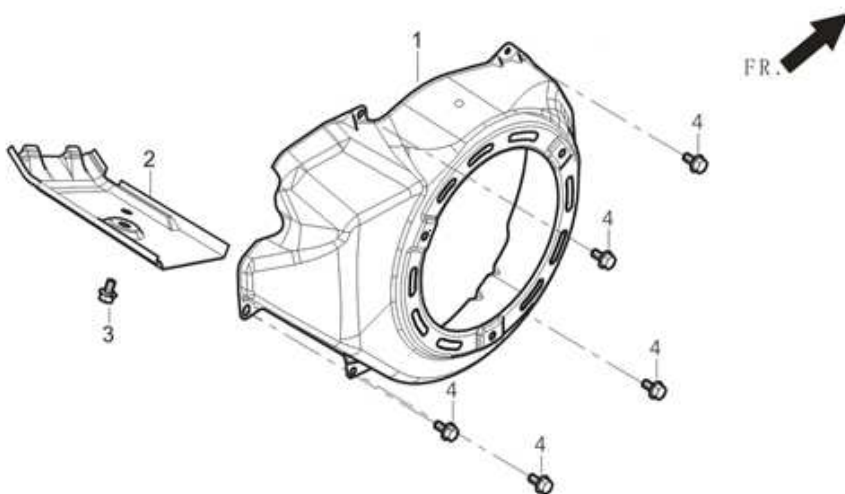
E06-12	14090-Z080110-00A0	PLATE SUBASSEMBLY, LIFTER STOPPER	1
E06-13	14313-Z010110-00A0	BOLT, ROCKER SHAFT	2
E06-14	14311-Z080110-00A0	ROCKER, VALVE	2
E06-15	14314-Z010110-00A0	NUT, VALVE ADJUSTING	2
E06-16	14312-Z010110-00A0	NUT, VALVE LOCK	2
E06-17	12105-Z080110-00A0	RETAINER, VALVE SPRING	1

### FIG.7 STARTER (E07)



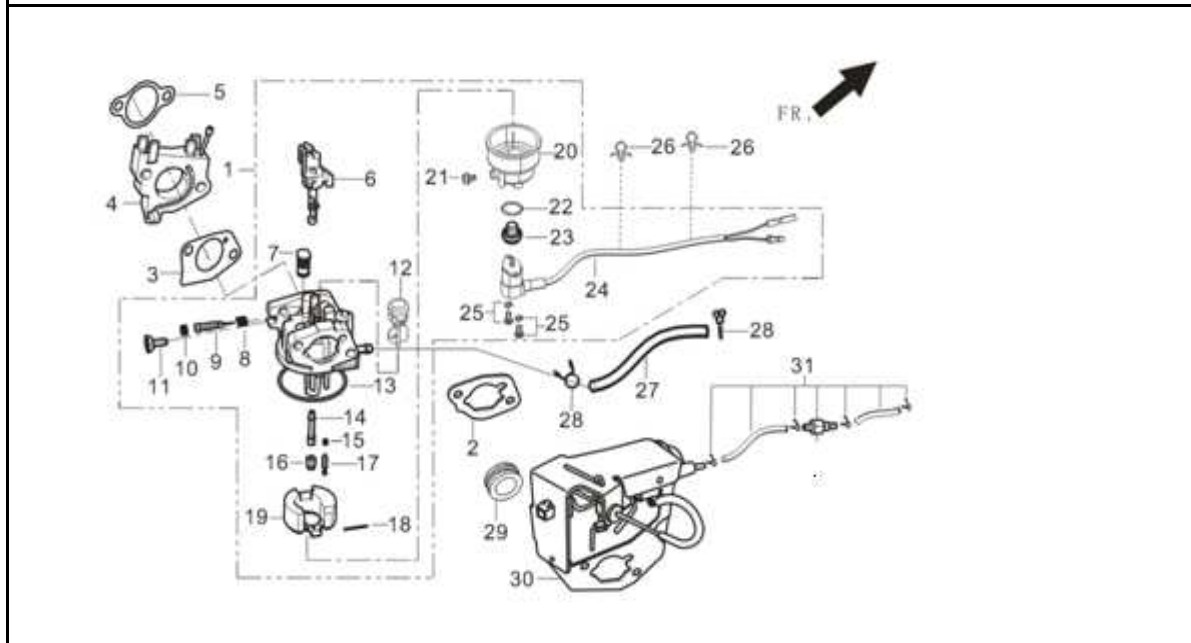
REF.NO.	PART NO	DESCRIPTION	Q'TY
E07-1	28200-Z310110-RTA0	STARTER ASSY, RECOIL	1
E07-2	90001-0608-01A0	BOLT	3

### FIG.8 SHROUD (E08)



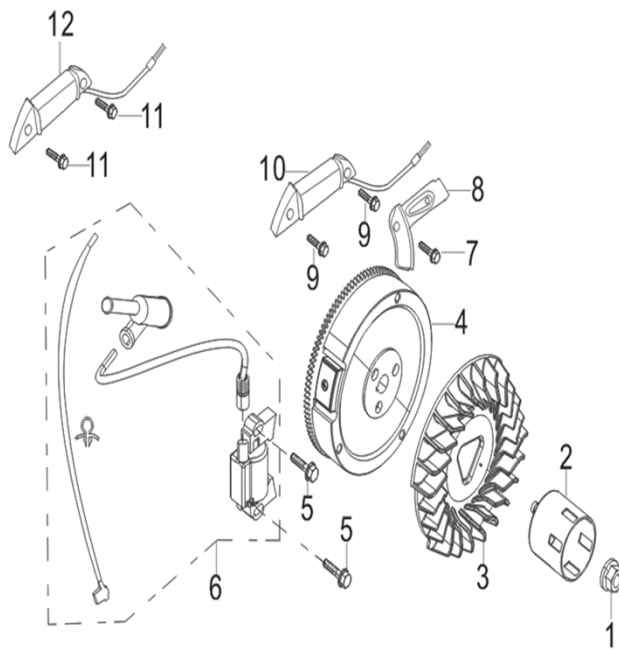
REF.NO.	PART NO	DESCRIPTION	Q'TY
E08-1	28110-Z310110-RTA0	SHROUD	1
E08-2	19304-Z100210-00A0	SHROUD, CYLINDER BODY	1
E08-3	90001-0612-01A0	BOLT	1
E08-4	90001-0612-01A0	BOLT	5

**FIG.9 CARBURETOR ASSY.**



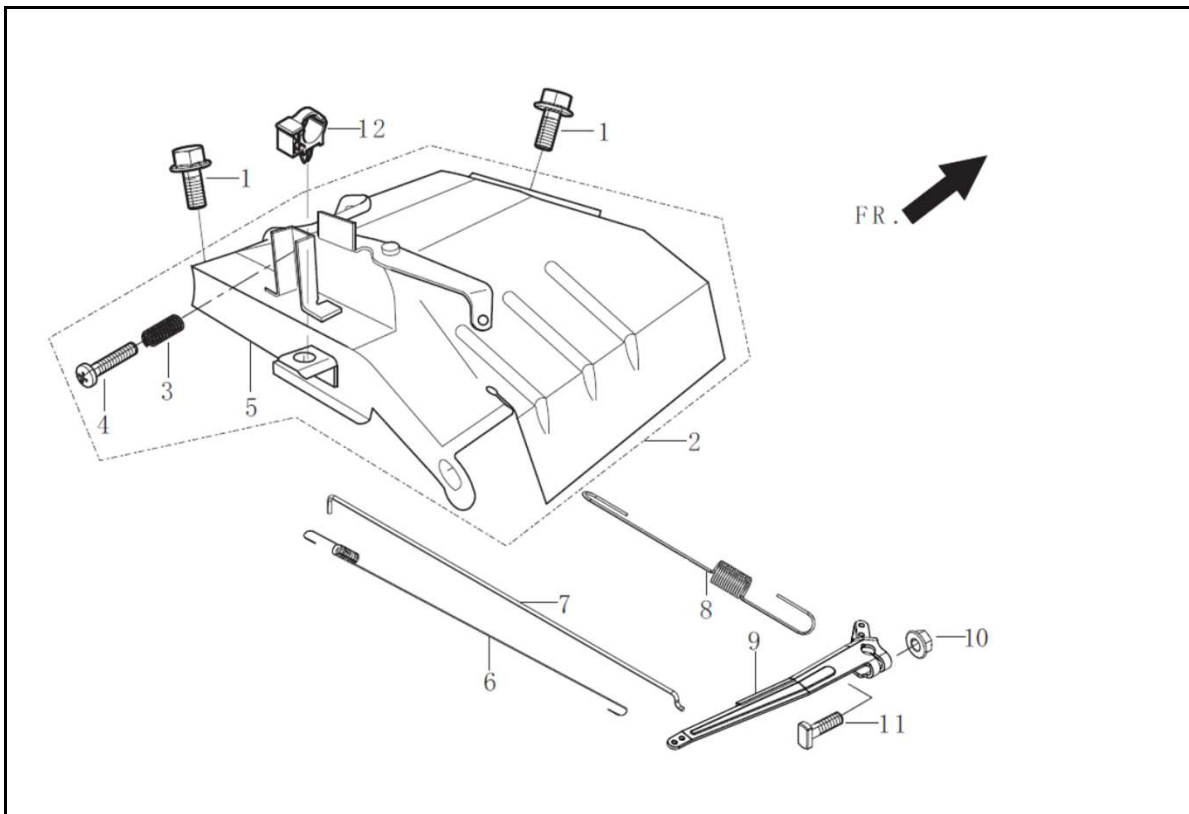
REF.NO.	PART NO	DESCRIPTION	Q'TY
E09-1	16100-Z101410-00A1	CARBURETOR ASSY.	1
E09-2	17001-Z080110-00A0	GASKET, AIR CLEANER	2
E09-3	16001-Z100110-00A0	GASKET, CARBURETOR	1
E09-4	16003-Z100210-00A0	PLATE, CARBURETOR INSULATOR	1
E09-5	17002-Z100110-00A0	GASKET, INLET	1
E09-26	90684-Z030210-00A0	CLIP	2
E09-27	90686-Z080410-00A0	TUBE, FUEL	1
E09-28	90740-Z010210-00A0	COLLAR	2
E09-29	17005-Z080110-00A0	SLEEVE, BREATHER TUBE FIXING	1
E09-30	16900-Z100120-00A0	CONTROL ASSY, CHOKE	1
E09-31	15150-Z080210-00A0	VALVE, ONE WAY	1

**FIG.10 FLYWHEEL / IMPELLER / STARTER PULLEY / IGNITION COIL**



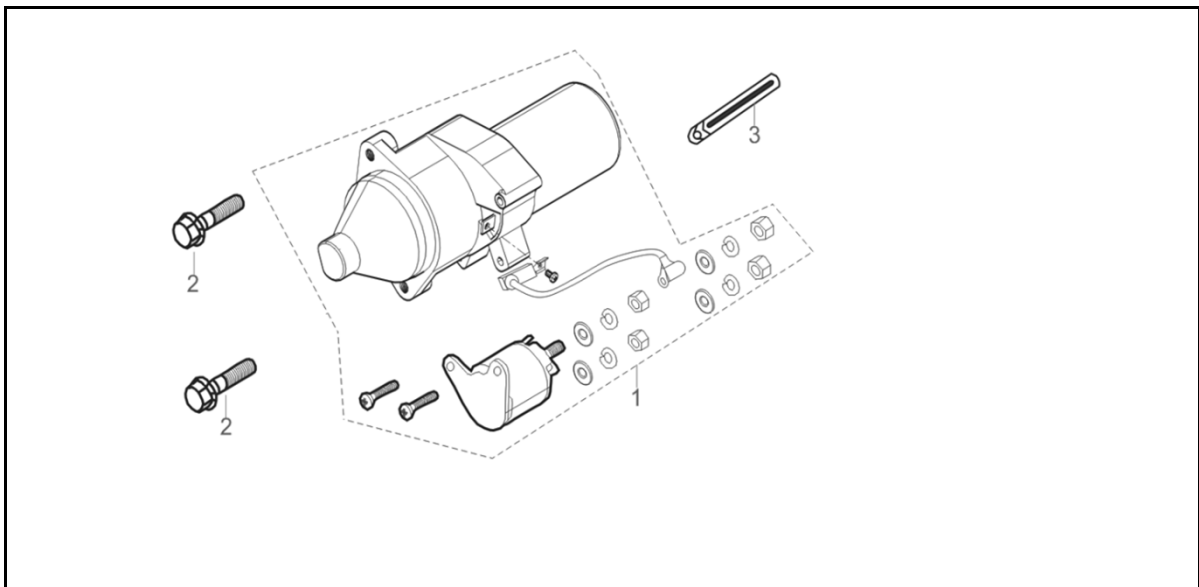
REF.NO.	PART NO	DESCRIPTION	Q'TY
E10-1	13501-Z080110-00A0	NUT, FLYWHEEL	1
E10-2	28002-Z100210-00A0	PULLEY,STARTER	1
E10-3	19352-Z100120-00A0	IMPELLER	1
E10-4	13510-Z190120-00A0	FLYWHEEL SUBASSEMBLY	1
E10-5	90001-0628-01A0	BOLT	2
E10-6	30400-Z190210-01A0	COIL, IGNITION	1
E10-7	90001-0610-01A0	BOLT	1
E10-8	30001-Z170110-00A0	CLAMP, CHARGE COIL	1
E10-9	90001-0628-01A0	BOLT	2
E10-10	30140-Z160130-00A0	COIL SUBASSEMBLY, CHARGE	1
E10-11	90001-0628-01A0	BOLT	2
E10-12	30102-Z190120-0000		1

**FIG.11 CONTROL ASSY, THROTTLE 油门操纵部件 (E11)**



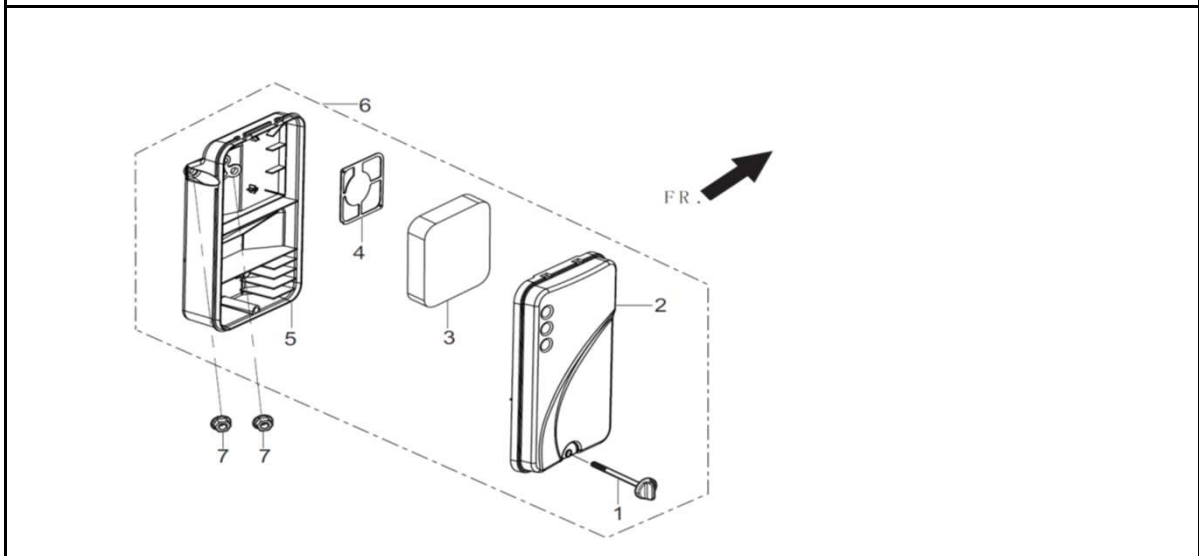
REF.NO.	PART NO	DESCRIPTION	Q'TY
E11-1	90001-0612-01A0	BOLT	2
E11-2	16520-Z100610-00A0	CONTROL ASSY, THROTTLE	1
E11-6	16012-Z080110-00A0	SPRING, THROTTLE VALVE RETURNING	1
E11-7	16062-Z100110-00A0	ROD, GOVERNEOR	1
E11-8	16063-Z100810-00A0	SPRING, GOVERNOR	1
E11-9	16070-Z100120-00A0	SUPPORT SUBASSEMBLY, GOVERNOR	1
E11-10	90305-0600-31A0	NUT	1
E11-11	16072-Z010110-00A0	BOLT, GOVERNOR SUPPORT	1
E11-12	90684-Z030210-00A0	COLLAR	1

**FIG.12 MOTOR ASSY,STARTING.**



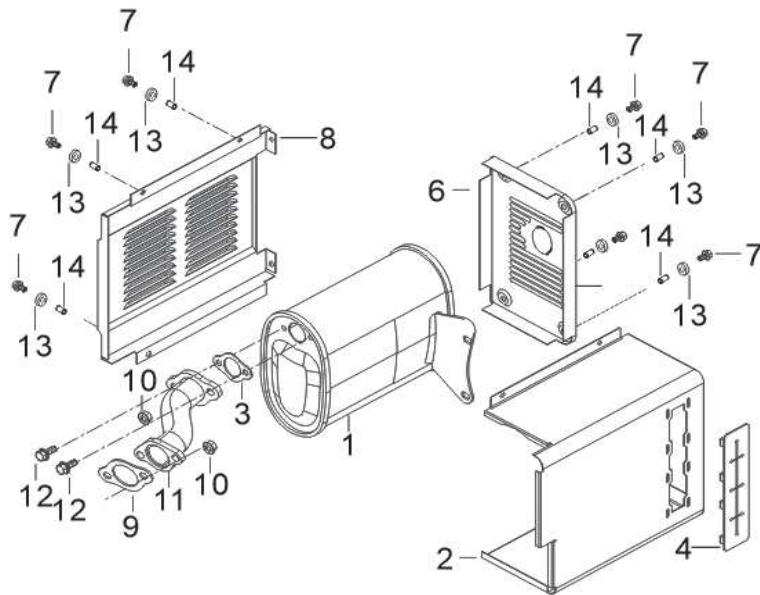
REF.NO.	PART NO	DESCRIPTION	Q'TY
E12-1	09100-Z170110-00A1	MOTOR, STARTING	1
E12-2	90001-0835-01A0	BOLT	2
E12-3	90684-Z030120-00A0	CLIP	1

**FIG.13 CLEANER, AIR**



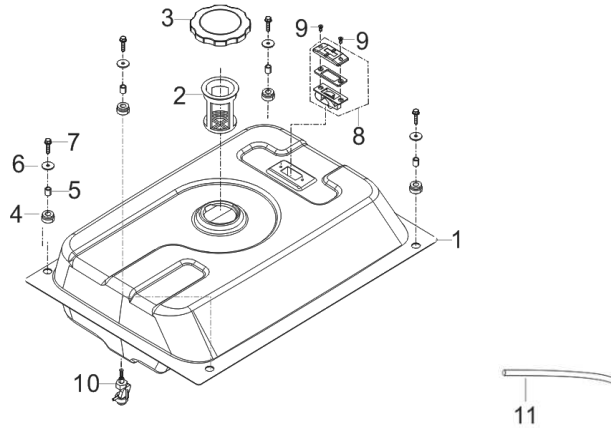
REF.NO.	PART NO	DESCRIPTION	Q'TY
F01-6	17100-Z100210-00A0	CLEANER, AIR	1
F01-7	90305-0600-31A0	NUT	2

**FIG.14 MUFFLER ASSY.**



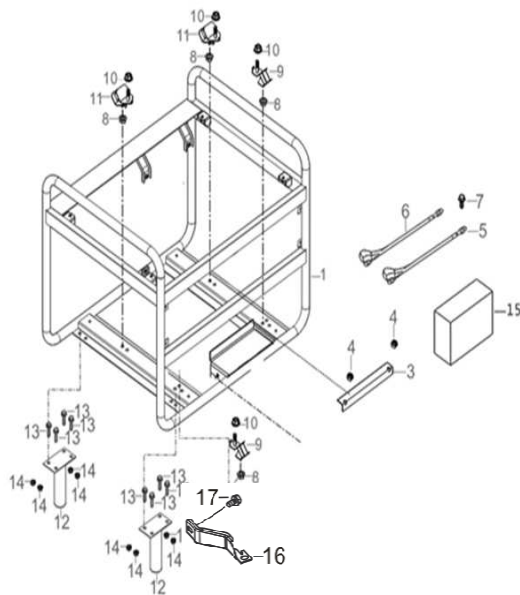
REF.NO.	PART NO	DESCRIPTION	Q'TY
F02-1	18100-Y030130-00A0	MUFFLER ASSY.	1
F02-2	18003HY030310-H3A0	COVER, MUFFLER INNER	1
F02-3	18001-Z190110-00A0	GASKET, EXHAUST OUTLET	1
F02-4	18005-Y030120-00A0	CUSHION, MUFFLER INSULATOR RUBBER	1
F02-6	18002-Y030110-H3A0	COVER, MUFFLER SIDE	1
F02-7	90007-0616-A1A0	BOLT	7
F02-8	18130-Y030110-H3A0	COVER, MUFFLER OUTER	1
F02-9	18001-Z080110-00A0	GASKET, EXHAUST OUTLET	1
F02-10	90303-0800-31A0	NUT	2
F02-11	18150-Z100520-00A0	PIPE, EXHAUST	1
F02-12	90001-0830-01A0	BOLT	2
F02-13	90408-0600-E1A0	WASHER, FLAT	7
F02-14	90403-0600-01A0	WASHER, FLAT	7

**FIG.15 TANK, FUEL**



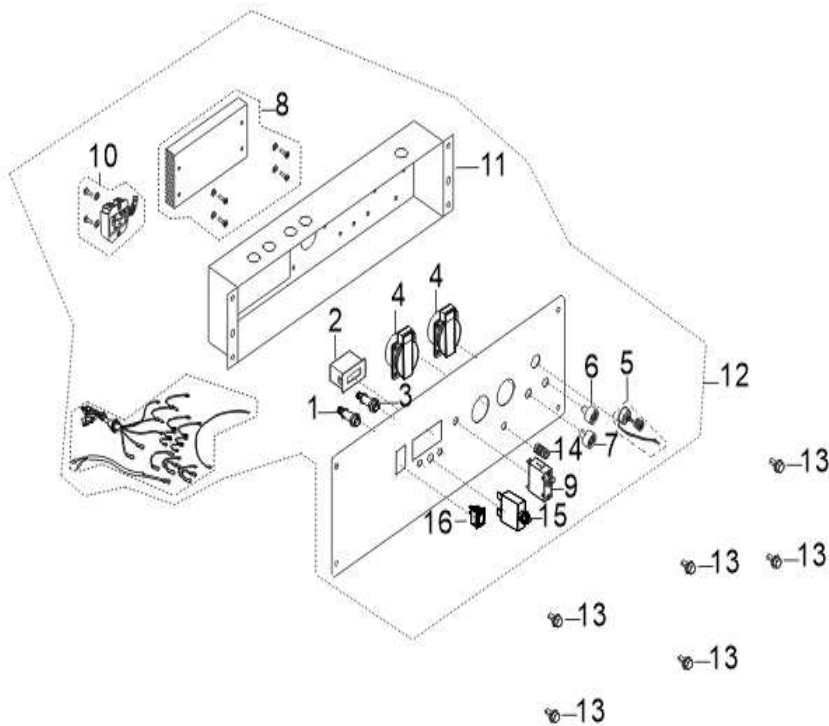
REF.NO.	PART NO	DESCRIPTION	Q'TY
F03-1	16620-Y030420-RTA0	TANK, FUEL	1
F03-2	16652-Y020120-00A0	STRAINER, FUEL	1
F03-3	16730-Y020130-H7A0	COVER, FUEL TANK	1
F03-4	16601-Y020120-00A0	SLEEVE, FUEL TANK RUBBER	4
F03-5	90683-Y020110-00A0	BUSH	4
F03-6	90408-Y020310-00A0	WASHER, FLAT	4
F03-7	90007-0625-A1A0	BOLT	4
F03-8	37200-Y020120-H3A0	LEVELER ASSY, OIL	1
F03-9	90104-0512-51A0	BOLT	2
F03-10	16750-Y020210-00A0	COCK ASSY, FUEL	1
F03-11	30431-Y030110-00A0	JACKET, RUBBER	1

**FIG.16 FRAME, ENGINE**



REF.NO.	PART NO	DESCRIPTION	Q'TY
F04-1	51100-X020210-H7A0	FRAME ASSY, ENGINE	1
F04-3	31142-X020110-H7A0	CLAMP, BATTERY	1
F04-4	90305-0600-31A0	NUT	2
F04-5	31114HY130310-00A0	WIRE, CATHODE	1
F04-6	31112HY130310-00A0	WIRE, ANODE	1
F04-7	90007-0612-A1A0	BOLT	1
F04-8	90327-0800-31A0	NUT	4
F04-9	51005HY030120-00A0	CUSHION, ENGINE FRAME	2
F04-10	90305-Z010210-01A0	NUT	4
F04-11	51012HY030120-00A0	CUSHION, ENGINE FRAME REAR	2
F04-12	51016HX020110-H7A0	SUPPORT, ENGINE FRAME SHOCK ABSORPTION	2
F04-13	90001-0816-01A0	BOLT	8
F04-14	90310-0800-31A0	NUT	8
F04-15	31110-Y230110-00A0	BATTERY	1
F04-16	17003-Y030110-00A0	SUPPORT, ATR CLEANER	1
F04-17	90001-0612-01A0	BOLT	1

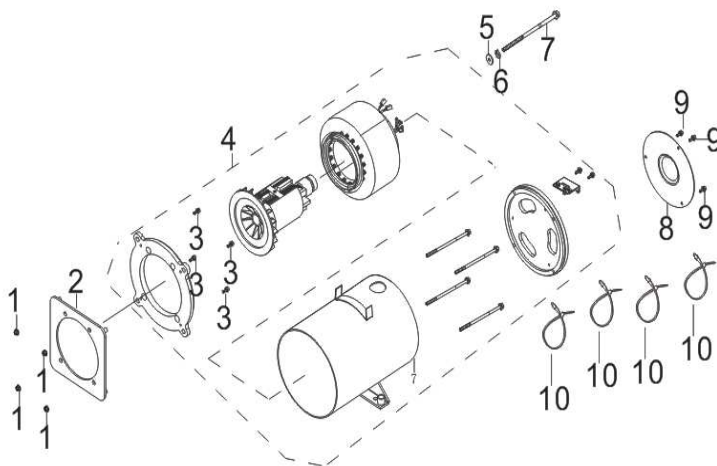
**FIG.17 PANEL SUBASSEMBLY, CONTROL**



REF.NO.	PART NO	DESCRIPTION	Q'TY
---------	---------	-------------	------

F05-1	35633-Y020110-0000	TERMINAL, POSITIVE ELECTRODE	1
F05-2	35632-YA60210-0000	TIMER	1
F05-3	35634-Y020110-0000	TERMINAL, NEGATIVE ELECTRODE	1
F05-4	35614-Y020110-0000	SOCKET SUBASSEMBLY, POWER SUPPLY	2
F05-5	30045-X020110-0000		1
F05-6	35617-X020110-0000		1
F05-7	35617-X020210-0000		1
F05-8	19114-X020110-0000	FIN, RADIATION	1
F05-9	35645-Y470110-0000	BREAKER, SINGLE-POLE CIRCUIT	1
F05-10	30060-X020110-0000	REGULATOR, VOLTAGE	1
F05-11	35601-X022510-0000	CASE, PANEL REAR	1
F05-12	35610-X024110-H300	PANEL SUBASSEMBLY, CONTROL	1
F05-13	90001-0616-01A0	BOLT	6
F05-14	35629-Y280110-0000	TERMINAL SUBASSEMBLY, GROUNDING	1
F05-15	31234-Y9H0110-0000	PROTECTOR, OVERCURRENT	1
F05-16	35160-Y7C0110-0000	SWITCH SUBASSEMBLY	1

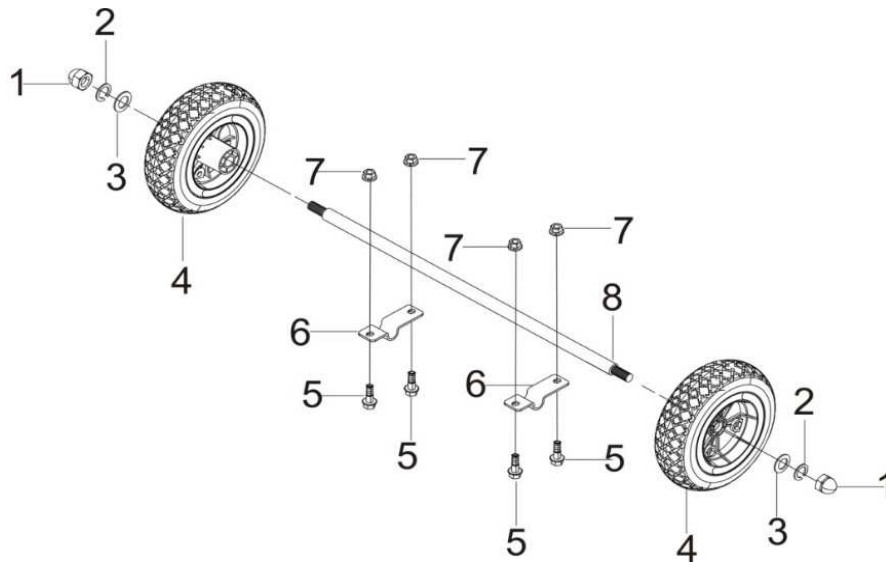
### FIG.18 ROTOR/STATOR



REF.NO.	PART NO	DESCRIPTION	Q'TY
F06-1	90327-0800-31A0	NUT	4
F06-2	08001-X020110-00A0		1
F06-3	90102-0820-01A0		4

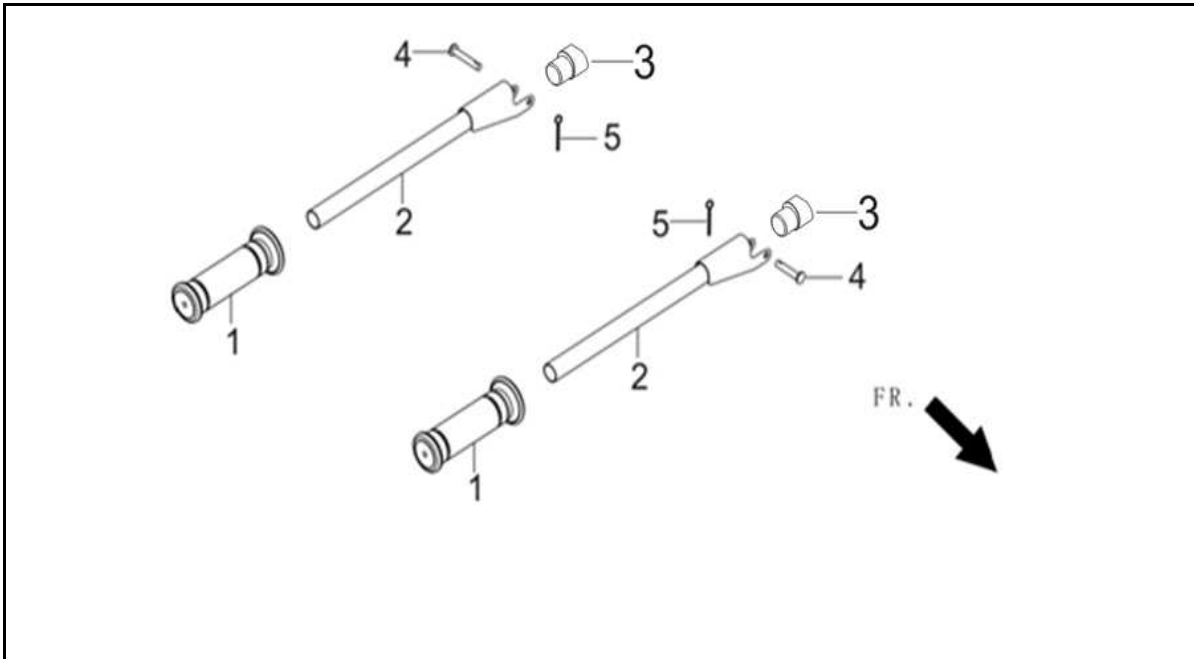
F06-4	31300-X020110-0000	MOTOR ASSY.	1
F06-5	90408-1000-E1A0	WASHER, FLAT	1
F06-6	90403-1000-01A0	WASHER, FLAT	1
F06-7	30049-Y030120-00A0	BOLT, ROTOR	1
F06-8	30022-X020110-H7A0	COVER, MOTOR TAIL	1
F06-9	90001-0512-01A0	BOLT	3
F06-10	90727-Y040110-00A0	BAND	4

**FIG.19 WHEEL**



REF.NO.	PART NO	DESCRIPTION	Q'TY
F07-1	90314-1000-31A0		2
F07-2	90403-1000-01A0	WASHER, FLAT	2
F07-3	90408-1000-E1A0	WASHER, FLAT	2
F07-4	44110-Y020710-0000	WHEEL, FRONT	2
F07-5	90001-0816-01A0	BOLT	4
F07-6	51126-X020110-H7A0	CLIP, WHEEL SHAFT FIXING LOWER	2
F07-7	90310-0800-31A0	NUT	4
F07-8	44020-X020310-H7A0	SHAFT, FRONT WHEEL	1

**FIG.20 HANDLE**



REF.NO.	PART NO	DESCRIPTION	Q'TY
F08-1	54101-X020110-0000	SLEEVE, HANDLE RUBBER	2
F08-2	54110-X020110-H7A0	HANDLE TUBE ASSY	2
F08-3	54102-X020110-0000	HANDLE TUBE CONNECTING SEAT	2
F08-4	90504-X020110-01A0	PIN ROLL	2
F08-5	90501-0336-01A0	PIN	2