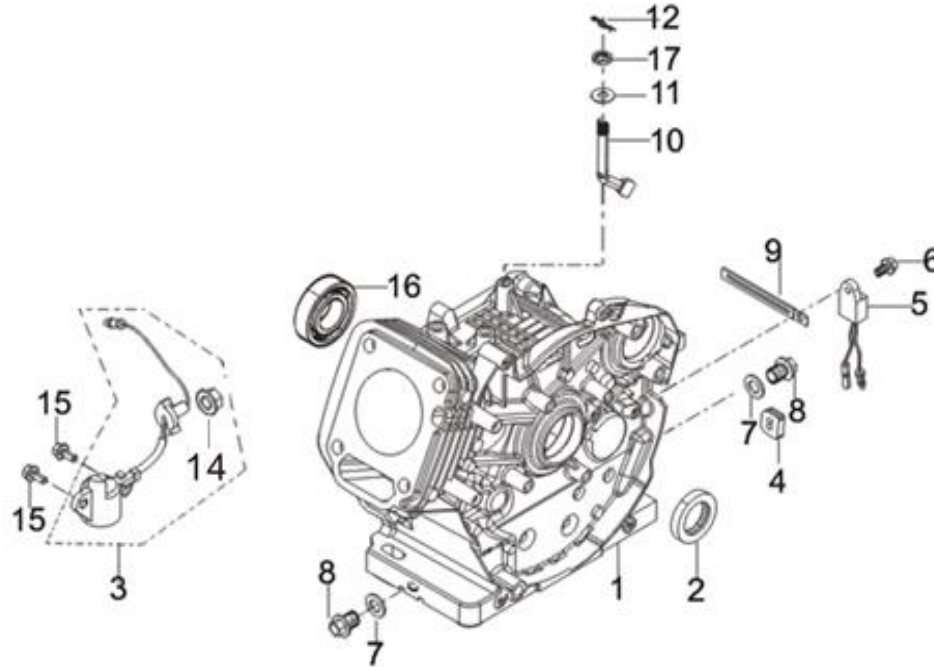


ROGE6000 EXPLODED VIEW LIST

FIG.1 CRANKCASE (E01)

CILINDRU (E01)

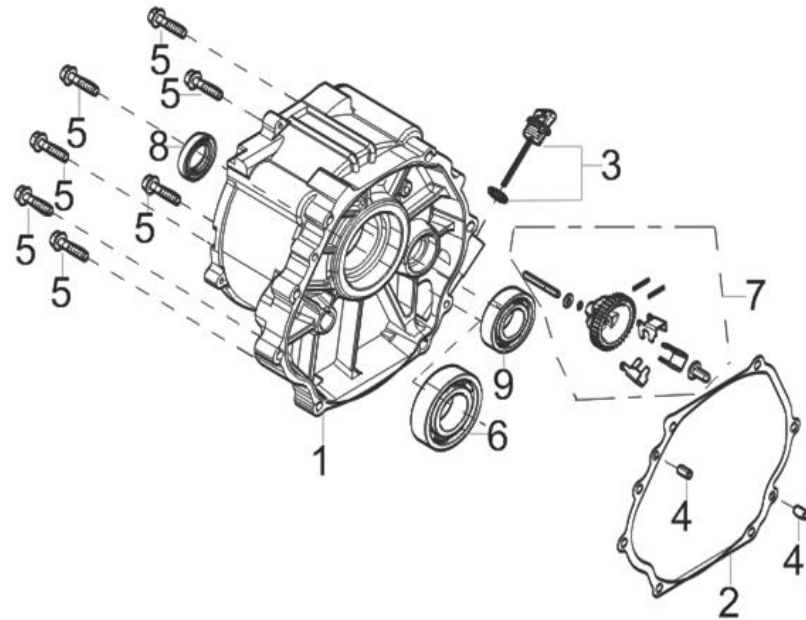


REF.NO.	COD COMANDA	DENUMIRE	CANTITATE NECESARA
E01-1	11310-Z220810-0BA0	CRANKCASE SUBASSEMBLY.	1
E01-2	90682-Z310110-00A0	SEAL, OIL	1
E01-3	37060-Z080120-00A0	SENSOR, ENGINE OIL	1
E01-4	28101-Z080110-00A0	PLUG, RUBBER	1
E01-5	37050-Z010311-00A0	PROTECTOR, OIL	1
E01-6	90001-0612-01A0	HEXAGON SOCKET FLANGE FACE BOLT - SMALL SERIES	1

E01-7	90412-Z080110-00A0	FLAT WASHER	2
E01-8	11007-Z080110-00A0	BOLT, DRAIN PLUG	2
E01-9	90684-Z030120-00A0	WIRE CLIP	1
E01-10	16061-Z100110-00A0	ARM, GOVERNOR	1
E01-11	90412-Z080210-00A0	FLAT WASHER	1
E01-12	90501-Z010110-00A0	COTTER PIN	1
E01-14	90305-Z010210-01A0	HEXAGON NUT WITH FLANGE	1
E01-15	90001-0616-01A0	HEXAGON SOCKET FLANGE FACE BOLT - SMALL SERIES	2
E01-16	90548-0202-CLA0	DEEP GROOVE BALL BEARING	1
E01-17	90682-Z100210-00A0	SEAL, OIL	1

FIG.2 COVER, CRANKCASE (E02)

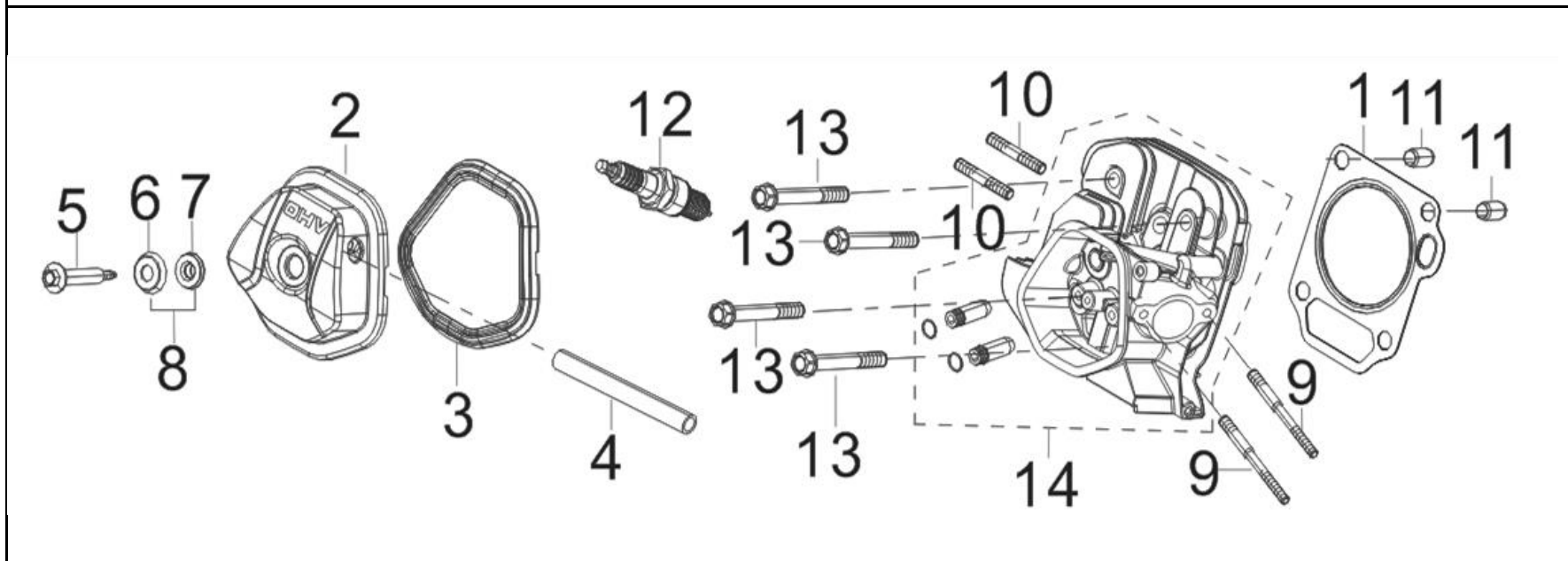
CAPAC MOTOR (E02)



REF.NO.	COD COMANDA	DENUMIRE	CANTITATE NECESARA
E02-1	11411-Z6L0110-0BA0	COVER, CRANKCASE	1
E02-2	11001-Z100120-00A0	GASKET, CRANKCASE	1
E02-3	15010-Z080330-Q5A0	DIPSTICK SUBASSEMBLY, OIL	1
E02-4	90502-0812-00A0	POSITION PIN - TYPE A	2
E02-5	90001-0840-01A0	HEXAGON SOCKET FLANGE FACE BOLT - SMALL SERIES	7
E02-6	90548-0207-CLAO	DEEP GROOVE BALL BEARING	1
E02-7	16400-Z100110-00A0	GEAR ASSY, GOVERNOR	1
E02-8	90682-Z310110-00A0	SEAL, OIL	1
E02-9	90548-0202-CLAO	DEEP GROOVE BALL BEARING	1

FIG.3 CYLINDER HEAD, CYLINDER COVER ASSY (E03)

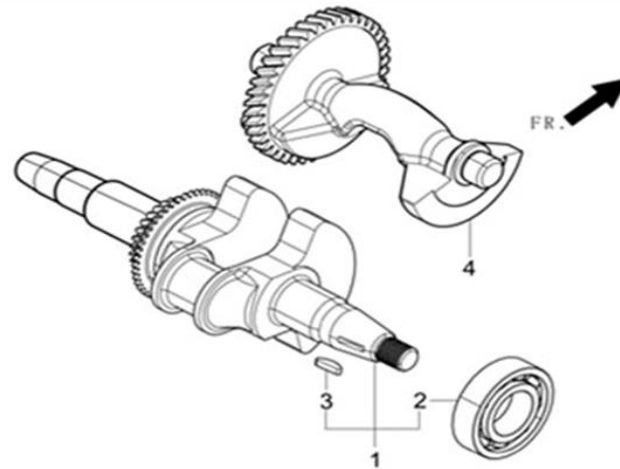
CHIULASA (E03)



REF.NO.	COD COMANDA	DENUMIRE	CANTITATE NECESARA
E03-1	12131-Z190410-00A0	GASKET, CYLINDER HEAD	1
E03-2	12410-Z310110-00A0	COVER SUBASSEMBLY, CYLINDER HEAD	1
E03-3	12004-Z080110-0001	CYLINDER HEAD COVER GASKET	1
E03-4	17004-Z080320-00A0	TUBE, BREATHER	1
E03-5	12032-Z080111-01A0	CYLINDER HEAD COVER BOLT	1
E03-8	12034-Z080110-00A9	#N/A	1
E03-9	90204-Z100410-00A0	STUD BOLT	2
E03-10	90203-Z010110-00A0	STUD BOLT	2
E03-11	90502-1220-00A0	POSITION PIN	2
E03-12	30010-Z010110-00A0	PLUG, SPARK	1
E03-13	12003-Z080110-00A0	CYLINDER HEAD BOLT	4
E03-14	12140-Z190150-0BA9	HEAD SUBASSEMBLY, CYLINDER	1

FIG.4 CRANKSHAFT ASSY.(E04)

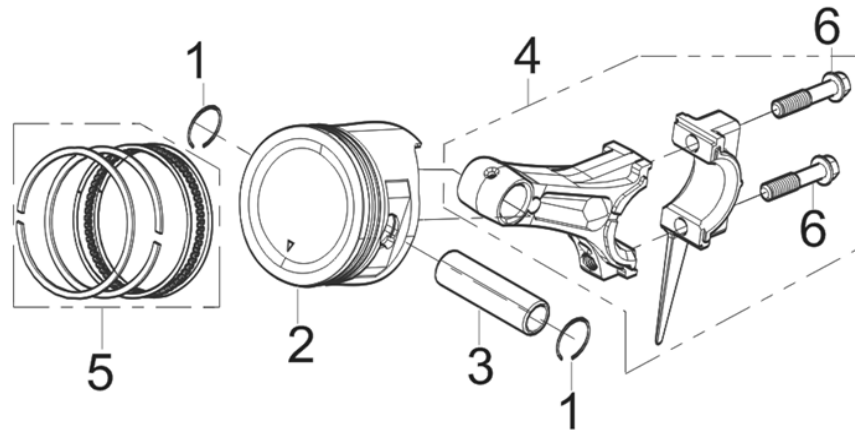
AMBIELAJ, ARBORE ECHILIBRARE (E04)



REF.NO.	COD COMANDA	DENUMIRE	CANTITATE NECESARA
E04-1	13300-Z192910-00A0	CRANKSHAFT ASSY.	1
E04-4	13400-Z190320-00A1	BALANCING SHAFT	1

FIG.5 PISTON/CONNECTING ROD (E05)

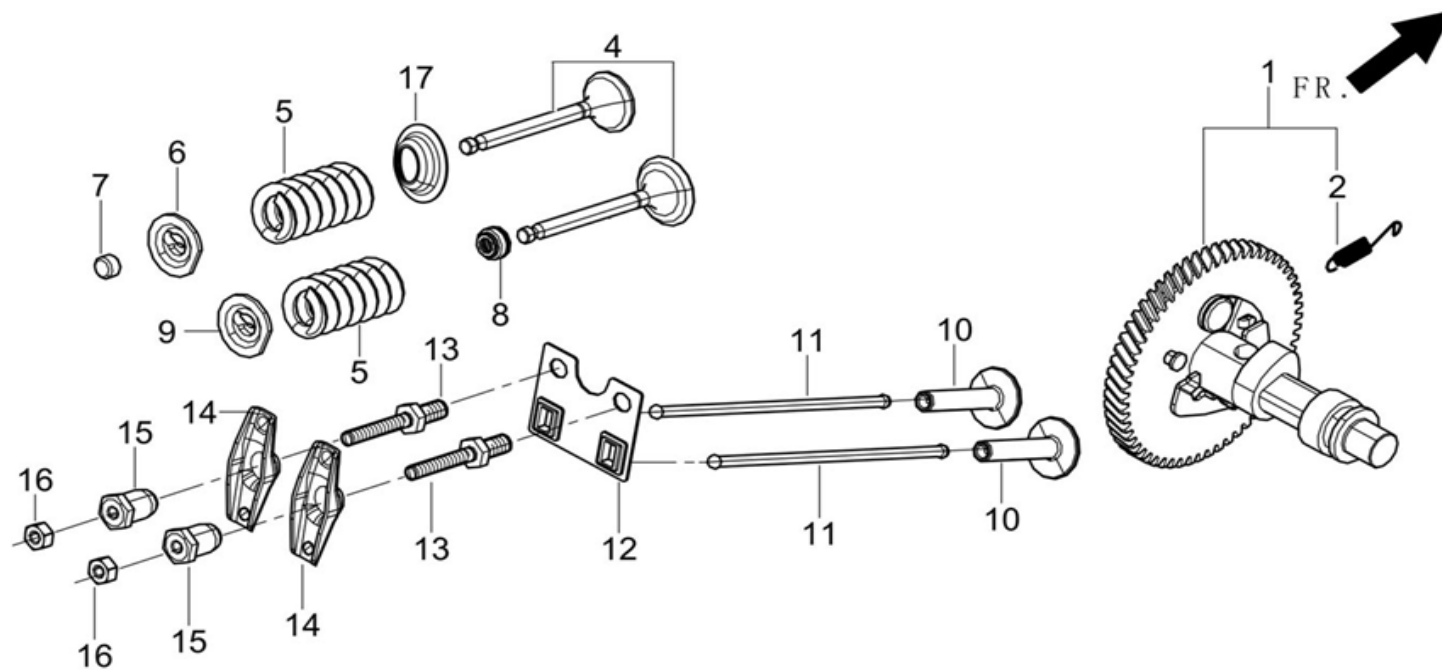
PISTON (E05)



REF.NO.	COD COMANDA	DENUMIRE	CANTITATE NECESARA
E05-1	13122-Z100110-00A0	CLIP, PISTON PIN	2
E05-2	13111-Z190310-00A9	PISTON	1
E05-3	13121-Z100110-00A0	PIN, PISTON	1
E05-4	13010-Z190121-00A0	ROD, CONNECTING	1
E05-5	13200-Z190210-00A9	RING ASSY, PISTON	1

FIG.6 CAMSHAFT ASSY. (E06)

SUPAPE, AXA CU CAME (E06)

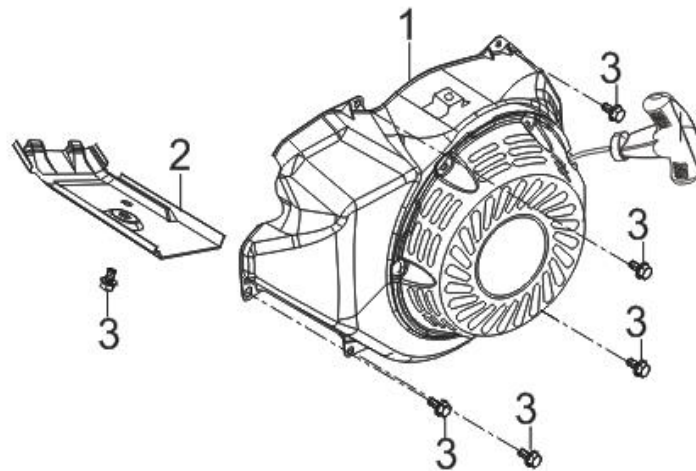


REF.NO.	COD COMANDA	DENUMIRE	CANTITATE NECESARA
E06-1	14200-Z190620-00A9	CAMSHAFT ASSY.	1
E06-4	12110-Z190110-00A9	VALVES SET	1
E06-5	12103-Z080110-00A0	SPRING, VALVE	2
E06-6	12107-Z080110-00A0	RETAINER, EXHAUST VALVE	1
E06-7	12104-Z080110-00A0	ROTATOR, VALVE	1
E06-8	12101-Z080110-00A0	GUIDE, SEAL	1
E06-9	12112-Z080110-00A0	SEAT, VALVE SPRING	1
E06-10	14081-Z080110-00A0	TAPPET, VALVE	2

E06-11	14070-Z100110-00A0	LIFTER SUBASSEMBLY, VALVE	2
E06-12	14090-Z080110-00A0	PLATE SUBASSEMBLY, LIFTER STOPPER	1
E06-13	14313-Z010110-00A0	ROCKSHAFT BOLT	2
E06-14	14311-Z080110-00A0	ROCKER, VALVE	2
E06-15	14314-Z010110-00A0	NUT, VALVE ADJUSTING	2
E06-16	14312-Z010110-00A0	NUT, VALVE LOCK	2
E06-17	12105-Z080110-00A0	RETAINER, VALVE SPRING	1

FIG.7 STARTER,RECOIL (E07)

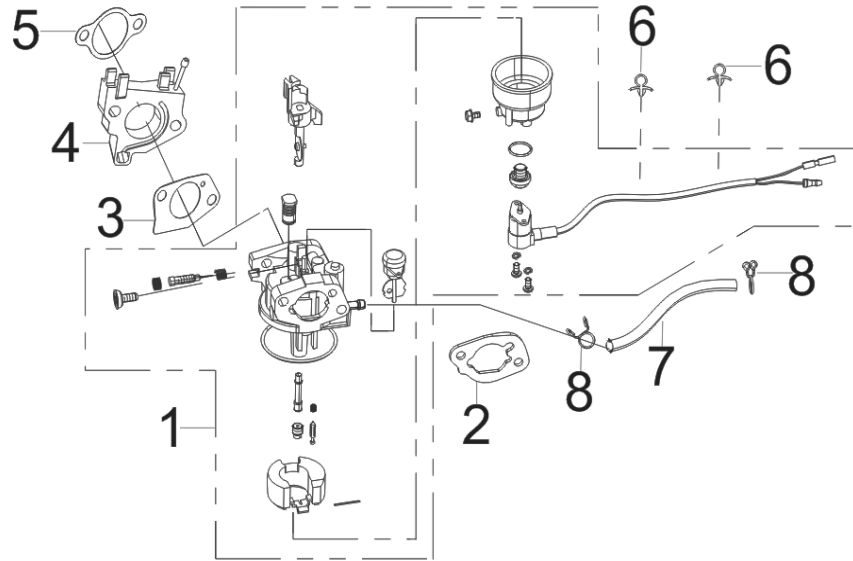
DEMAROR (E07)



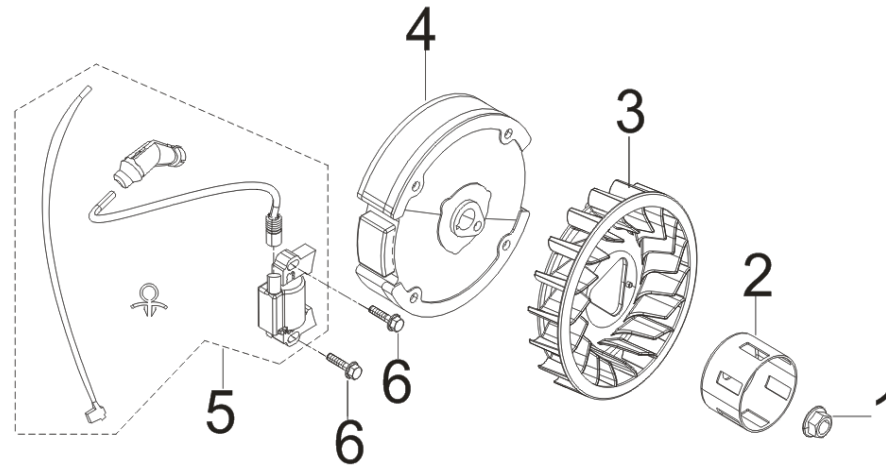
REF.NO.	COD COMANDA	DENUMIRE	CANTITATE NECESARA
E07-1	28100-Z100610-10A3	MANUAL STARTING ASSEMBLY	1
E07-2	19304-Z100210-00A0	SHROUD, CYLINDER BODY	1
E07-3	90001-0612-01A0	BOLT	5

FIG.8 CARBURETOR ASSY.(E09)

CARBURATOR (E09)

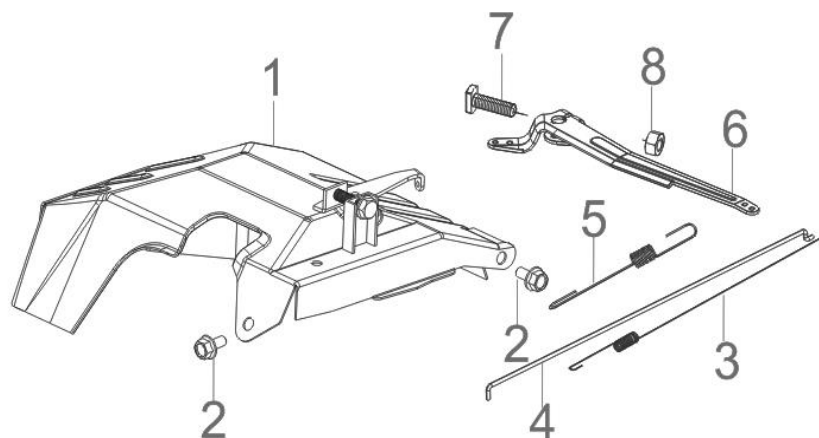


REF.NO.	COD COMANDA	DENUMIRE	CANTITATE NECESARA
E09-1	16100-Z191310-00M0	CARBURETOR ASSY.	1
E09-2	17001-Z080110-00A0	AIR CLEANER SEAL GASKET	2
E09-3	16001-Z100110-00A0	CARBURETOR SEAL GASKET	1
E09-4	16003-Z100110-00A0	PLATE, CARBURETOR INSULATOR	1
E09-5	17002-Z100110-00A0	GASKET, INLET	1
E09-6	90684-Z030210-00A0	WIRE CLIP	2
E09-7	90686-Z190810-00A0	TUBE, FUEL	1
E09-8	90740-Z010210-00A0	COLLAR	2

FIG.9 FLYWHEEL SUBASSEMBLY (E10)**VOLANTA, MODUL APRINDERE (E10)**

REF.NO.	COD COMANDA	DENUMIRE	CANTITATE NECESARA
E10-1	13501-Z080111-00A0	NUT, FLYWHEEL	1
E10-2	28002-Z100210-00A0	PULLEY,STARTER	1
E10-3	19352-Z100210-00A0	IMPELLER	1
E10-4	13510-Z220110-00A0	FLYWHEEL SUBASSEMBLY	1
E10-5	30400-Z310311-00A0	COIL, IGNITION	1
E10-6	90001-0628-01A0	HEXAGON SOCKET FLANGE FACE BOLT - SMALL SERIES	2

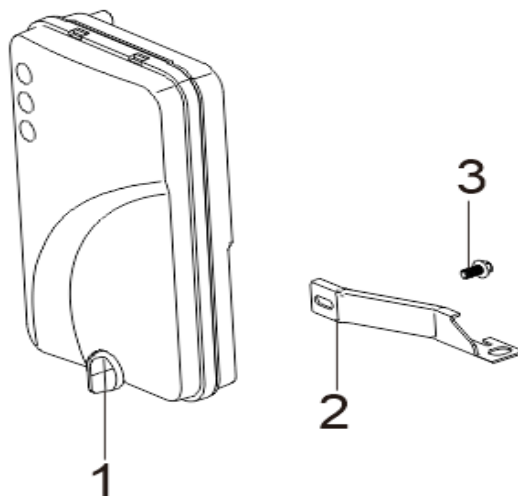
FIG.10 CONTORL ASSY.(E11)**CONTROL ACCELERATIE (E11)**



REF.NO.	COD COMANDA	DENUMIRE	CANTITATE NECESARA
E11-1	16520-Z6L0110-00A0	CONTROL ASSY, THROTTLE	1
E11-2	90001-0612-01A0	HEXAGON SOCKET FLANGE FACE BOLT - SMALL SERIES	2
E11-3	16012-Z080110-00A0	SPRING, THROTTLE VALVE RETURNING	1
E11-4	16062-Z100110-00A0	ROD, GOVERNEOR	1
E11-5	16063-Z100310-00A0	SPRING, GOVERNOR	1
E11-6	16070-Z100120-00A0	GOVERNOR BRACKET SUBASSEMBLY	1
E11-7	16072-Z010410-01A0	BOLT, GOVERNOR SUPPORT	1
E11-8	90305-0600-31A0	HEXAGON NUT WITH FLANGE	1

FIG.11 AIR CLEANER (F01)

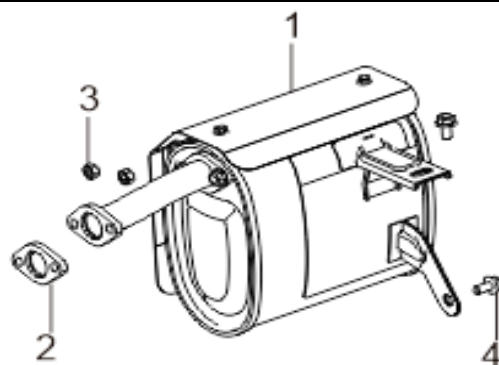
FILTRU DE AER (F01)



REF.NO.	COD COMANDA	DENUMIRE	CANTITATE NECESARA
F01-1	17100-Z310710-0000	AIR CLEANER	1
F01-2	17003-Y290110-00A0	SUPPORT, ATR CLEANER	1
F01-3	90001-0612-01A0	HEXAGON SOCKET FLANGE FACE BOLT - SMALL SERIES	1

FIG.12 MUFFLER ASSY.(F02)

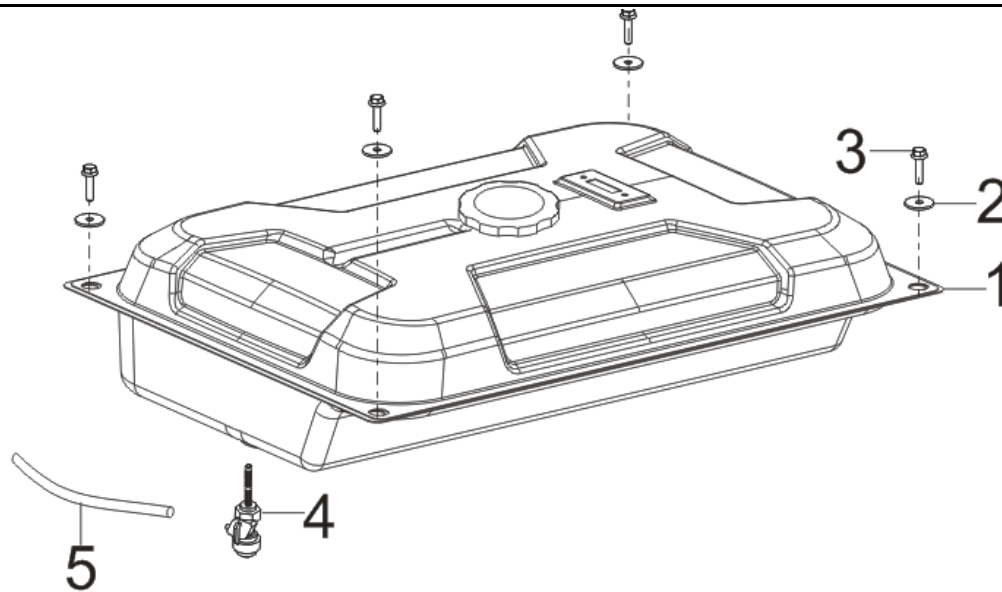
ESAPAMENT (F02)



REF.NO.	COD COMANDA	DENUMIRE	CANTITATE NECESARA
F02-1	18100-W170210-00A0	MUFFLER ASSY.	1
F02-2	18001-Z190110-00A0	GASKET, EXHAUST OUTLET	1
F02-3	90303-0800-31A0	TYPE 1 HEXAGON NUT	2
F02-4	90001-0816-01A0	HEXAGON SOCKET FLANGE FACE BOLT - SMALL SERIES	2

FIG.13 TANK, FUEL (F03)

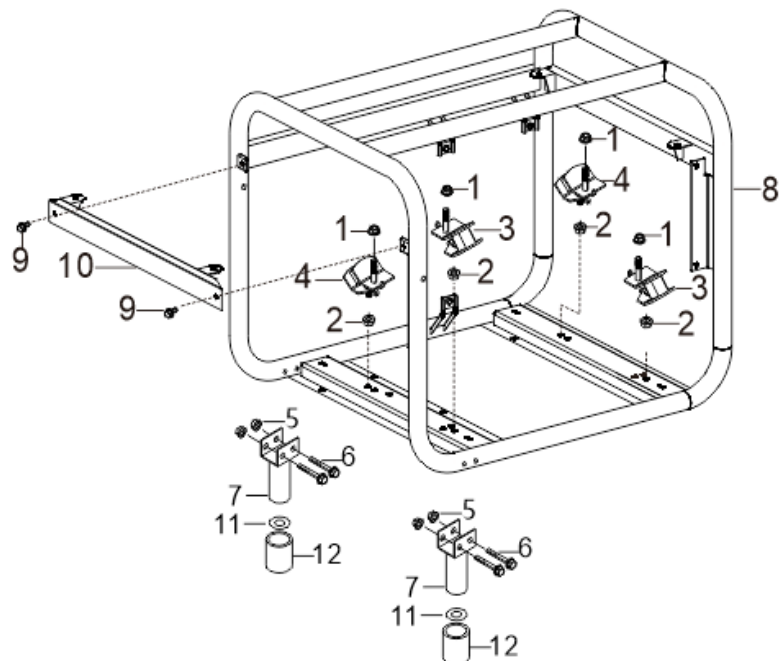
REZERVOR COMBUSTIBIL (F03)



REF.NO.	COD COMANDA	DENUMIRE	CANTITATE NECESARA
F03-1	16600-W040111-RTA0	FUEL TANK	1
F03-2	90408-Y020310-00A0	FLAT WASHER - GRADE A	4
F03-3	90001-0625-01A0	HEXAGON SOCKET FLANGE FACE BOLT - BIG SERIES - GRA	4
F03-4	16750-Y020211-00A0	COCK ASSY, FUEL	1
F03-5	30431-Y030110-00A0	JACKET, RUBBER	1

FIG.14 FRAME, ENGINE (F04)

CADRU (F04)

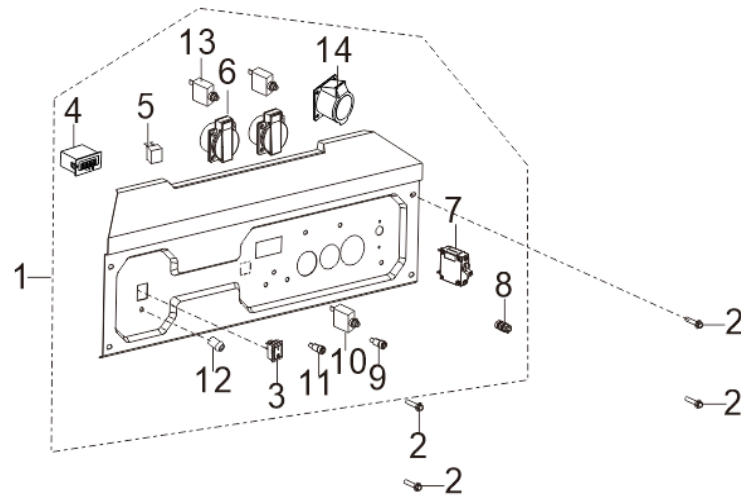


REF.NO.	COD COMANDA	DENUMIRE	CANTITATE NECESARA
F04-1	90306-1000-31A0	HEXAGON NUT WITH FLANGE - FIN THREAD	1
F04-2	90305-0800-31A0	HEXAGON NUT WITH FLANGE	4
F04-3	51005HY030120-00A0	CUSHION, ENGINE FRAME	2
F04-4	51012HY030120-00A0	CUSHION, ENGINE FRAME REAR	2
F04-5	90305-0600-31A0	HEXAGON NUT WITH FLANGE	4
F04-6	90001-0645-01A0	HEXAGON SOCKET FLANGE FACE BOLT - SMALL SERIES	4
F04-7	51016-Y090410-H7A0	SUPPORT, ENGINE FRAME SHOCK ABSORPTION	2
F04-8	51100-W230110-H7A0	FRAME ASSY, ENGINE	1

F04-9	90001-0612-01A0	HEXAGON SOCKET FLANGE FACE BOLT - SMALL SERIES	2
F04-10	51150-W040110-H7A0	CROSSPIECE SUBASSEMBLY	1
F04-11	90408-Y090110-01A0	FLAT WASHER - GRADE A	2
F04-12	51039-Y090110-00A0	ENGINE FRAME SHOCK ABSORPTION SUPPORT SLEEVE	2

FIG.15 PANEL SUBASSEMBLY, CONTROL (F05)

PANOU CONTROL (F05)

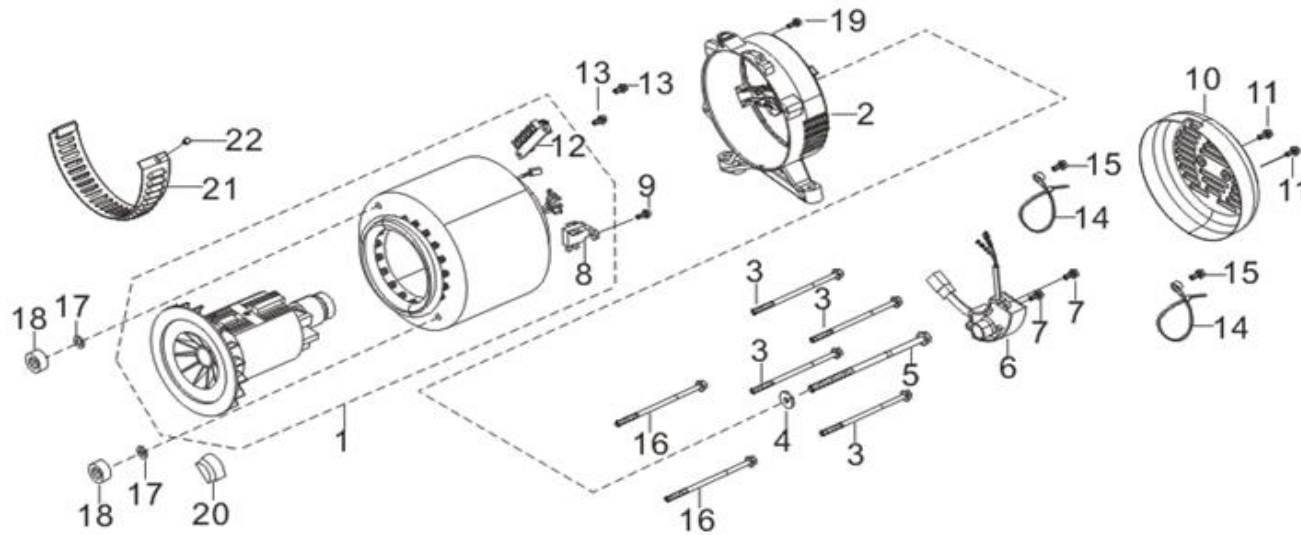


REF.NO.	COD COMANDA	DENUMIRE	CANTITATE NECESARA
F05-1	35610-YS70110-H7A0	PANEL SUBASSEMBLY, CONTROL	1
F05-2	90001-0612-01A0	BOLT	4
F05-3	35160-Y020110-0000	SWITCH SUBASSEMBLY	1
F05-4	35632-YA60210-0000	TIMER	1
F05-5	35621-Y020110-0000	BRIDGE, RECTIFICATION	1
F05-6	35614-Y020110-0000	SOCKET SUBASSEMBLY, POWER SUPPLY	2

F05-7	35645-Y240110-0000	BREAKER, SINGLE-POLE CIRCUIT	1
F05-8	35629-Y280110-0000	TERMINAL SUBASSEMBLY, GROUNDING	1
F05-9	35634-Y020110-0000	TERMINAL, NEGATIVE ELECTRODE	1
F05-10	31234-Y9H0110-0000	PROTECTOR, OVERCURRENT	1
F05-11	35633-Y020110-0000	TERMINAL, POSITIVE ELECTRODE	1
F05-12	37018-Y900110-0000	OIL ALARM INDICATOR	1
F05-13	31234-YCK0110-0000	PROTECTOR, OVERCURRENT	2
F05-14	35614-Y240310-0000	SOCKET SUBASSEMBLY, POWER SUPPLY	1

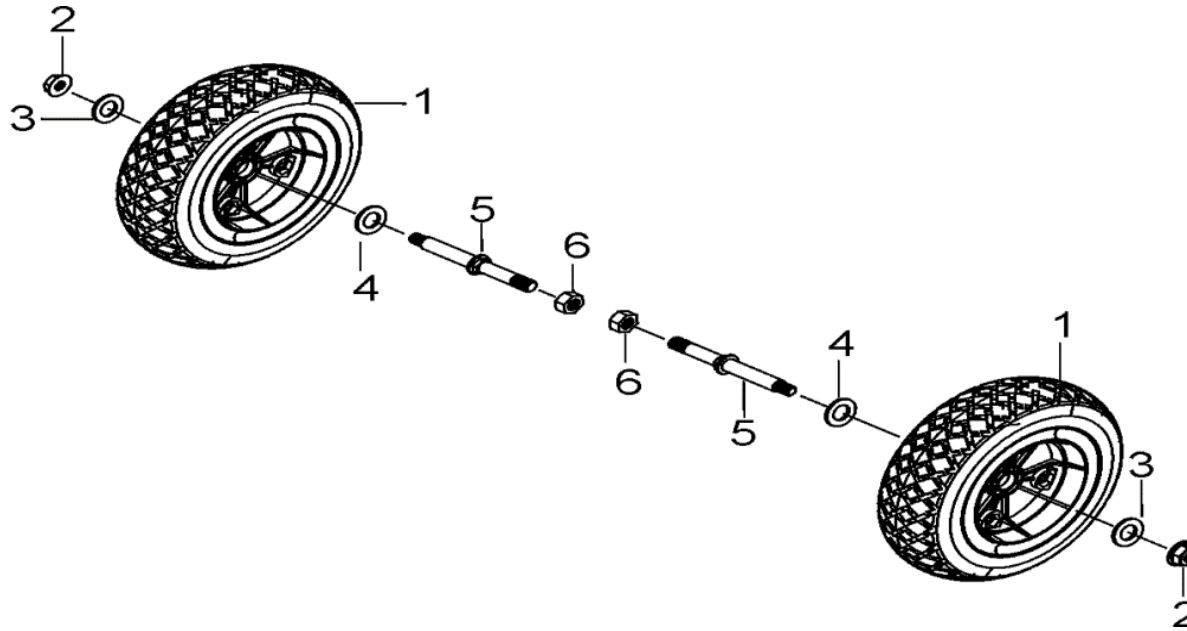
FIG.16 ROTOR/STATOR (F06)

ALTERNATOR (F06)



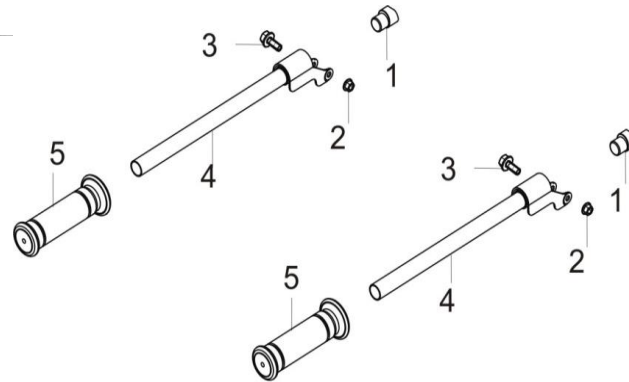
REF.NO.	COD COMANDA	DENUMIRE	CANTITATE NECESARA
F06-1	31300-Y4H0110-00A0	MOTOR ASSY.	1
F06-2	30021-Y030210-00A0	MOTOR SUPPORT	1
F06-3	30048-Y030120-00A0	STATOR BOLT	4
F06-4	90408-Y030110-00A0	FLAT WASHER - GRADE A	1
F06-5	30049-Y030120-00A0	BOLT, ROTOR	1
F06-6	30060-Y030120-00A0	REGULATOR, VOLTAGE	1
F06-7	90001-0516-01A0	HEXAGON SOCKET FLANGE FACE BOLT - SMALL SERIES	2
F06-8	31320-Y030120-0000	BRUSH SUBASSEMBLY, CARBON	1
F06-9	90001-0516-01A0	HEXAGON SOCKET FLANGE FACE BOLT - SMALL SERIES	1
F06-10	30022-Y030110-H7A0	MOTOR TAIL COVER	1
F06-11	90001-0512-01A0	HEXAGON SOCKET FLANGE FACE BOLT - SMALL SERIES	2
F06-12	31303HY020110-0000	BLOCK, TERMINAL	1
F06-13	90001-0516-01A0	BOLT	2
F06-14	90727-Y020110-00A0	BAND	2
F06-15	90001-0516-01A0	BOLT	2
F06-16	31316-Y030130-00A0	STATOR BOLT	2
F06-17	90403-0500-03A0	STANDARD SPRING WASHER	2
F06-18	31317-Y030110-00A0	NUT, STATOR	2
F06-19	90001-0512-01A0	HEXAGON SOCKET FLANGE FACE BOLT - SMALL SERIES	1
F06-20	30023-Y030120-00A0	STOPPER, MOTOR RIGHT COVER	1
F06-21	30024-Y730110-00A0	SHROUD, MOTOR	1
F06-22	90001-0510-01A0	HEXAGON SOCKET FLANGE FACE BOLT - SMALL SERIES	1


FIG.19 WHEEL ASSY,FRONT (F07) ROATA



REF.NO.	COD COMANDA	DENUMIRE	CANTITATE NECESARA
F08-1	44110-Y020910-0000	WHEEL, FRONT	2
F08-2	90332-Y110510-00A0	TYPE 1 HEXAGON NUT	2
F08-3	90408-Y990310-01A0	FLAT WASHER - GRADE A	2
F08-4	90408-Y110510-01A0	FLAT WASHER - GRADE A	2
F08-5	44020-Y090310-01A0	SHAFT, FRONT WHEEL	2
F08-6	90332-Y110610-00A0	TYPE 1 HEXAGON NUT	2

FIG.20 TUBE ASSY, HANDLE (F08) MANER



FR. 

REF.NO.	COD COMANDA	DENUMIRE	CANTITATE NECESARA
F08-1	54102-Y020410-00A0	HANDLE TUBE CONNECTING SEAT	2
F08-2	90310-0800-31A0	TYPE 2 ALL METAL HEXAGON LOCK NUT WITH FLANGE	2
F08-3	90001-0850-01A0	HEXAGON SOCKET FLANGE FACE BOLT - SMALL SERIES	2
F08-4	54110-Y030420-H7A0	HANDLE TUBE ASSY	2
F08-5	54101-Y020110-00A0	SLEEVE, HANDLE RUBBER	2