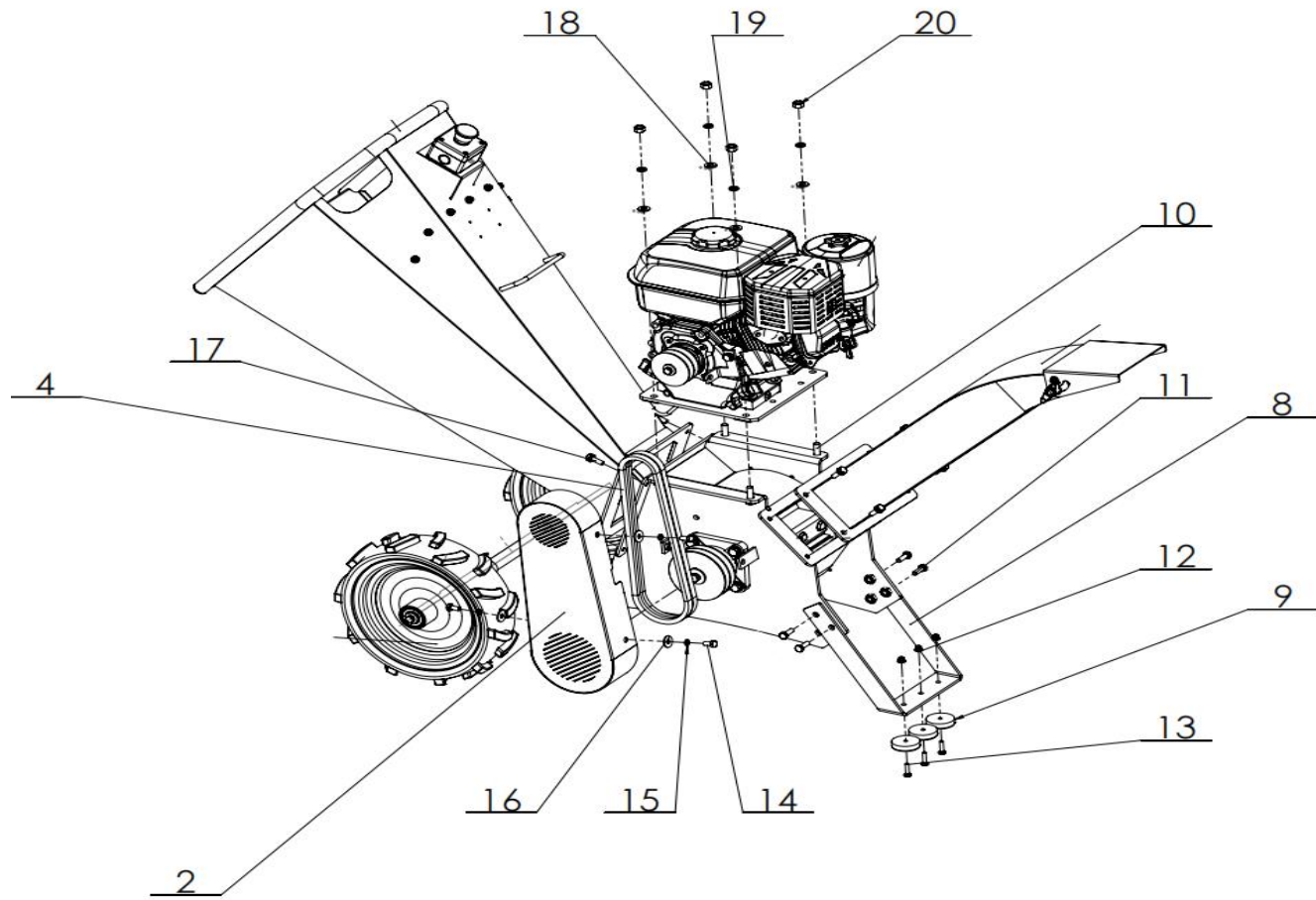


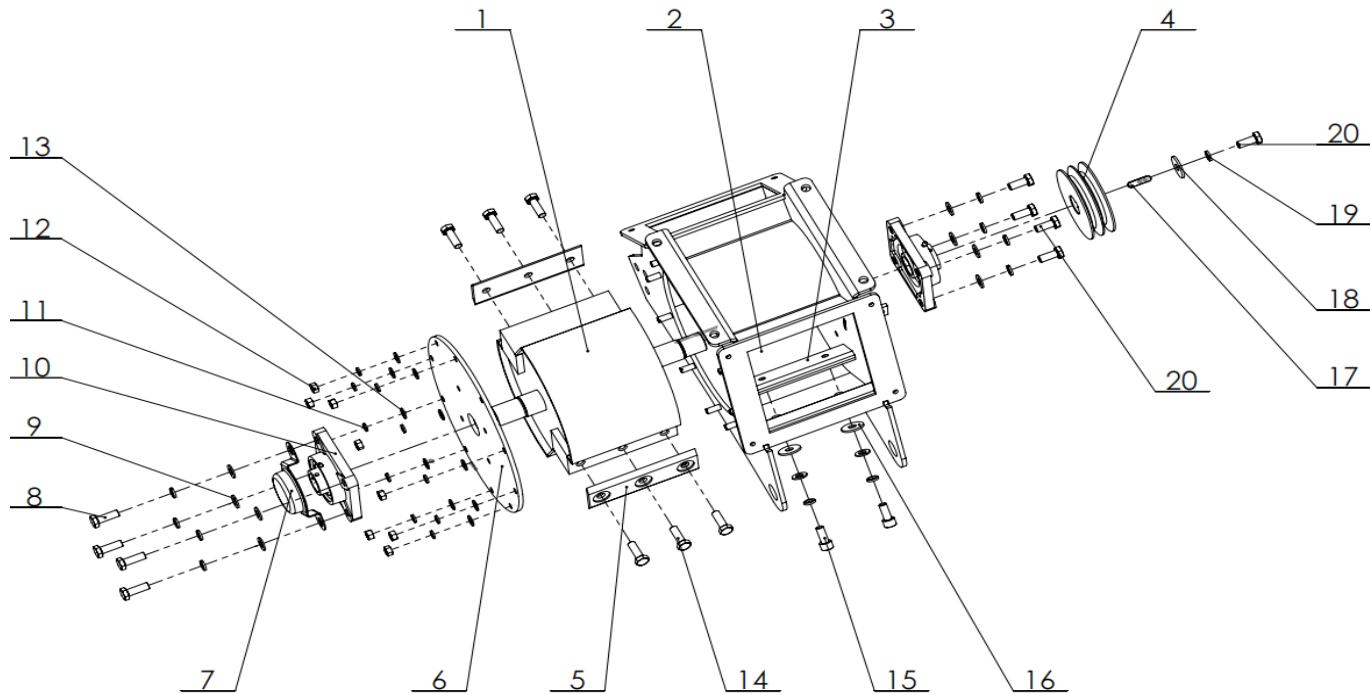
CUREA Machine components(standard)



REF.NO.	COD COMANDA	DENUMIRE	CANTITATE NECESARA
2	2601500081-0003	belt cover	1
4	2123600071-0001	V-belt	2
8	2427500005-0002	supporting foot	1
9	2424900002-0001	Cushion	3

10	360250039	bolt M10×30	4
11	360250055	bolt M8×25	4
12	360180012	nut M6	3
13	360410040	screw M6×25	3
14	360250021	bolt M8×16	3
15	360620011	standard washer 8	3
16	360640006	big washer 8	3
17	361250007	bolt, spring washer and flat washer assemblies M8×25	8
18	360660024	flat washer 10	4
19	360620013	spring washer 10	4
20	360010008	Nut M10	4

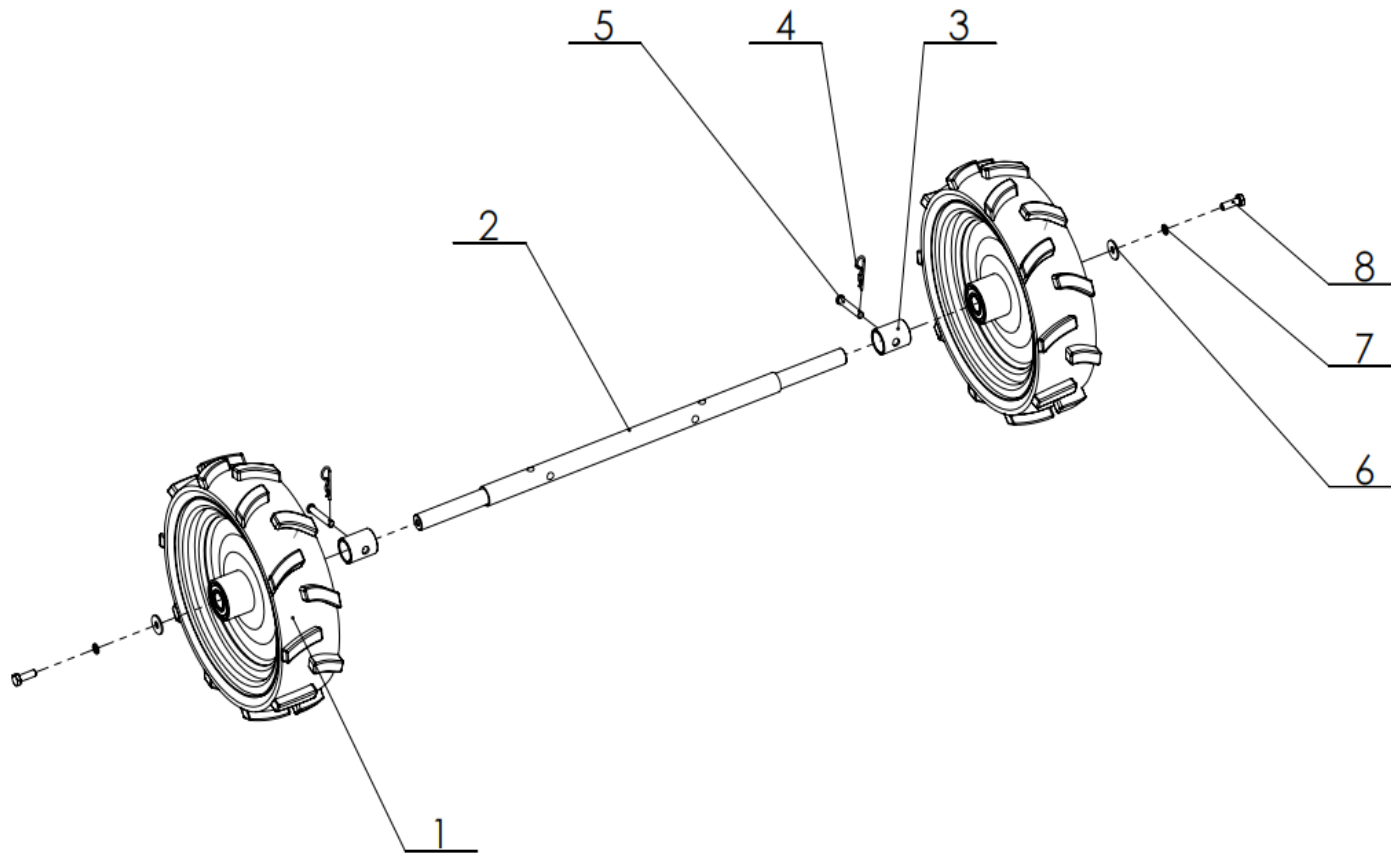
CUTITE Crushing room assy



REF.NO.	COD COMANDA	DENUMIRE	CANTITATE NECESARA
1	2712100015-0001	Blade holder	1
2	2717700002-0002	Crushing room	1

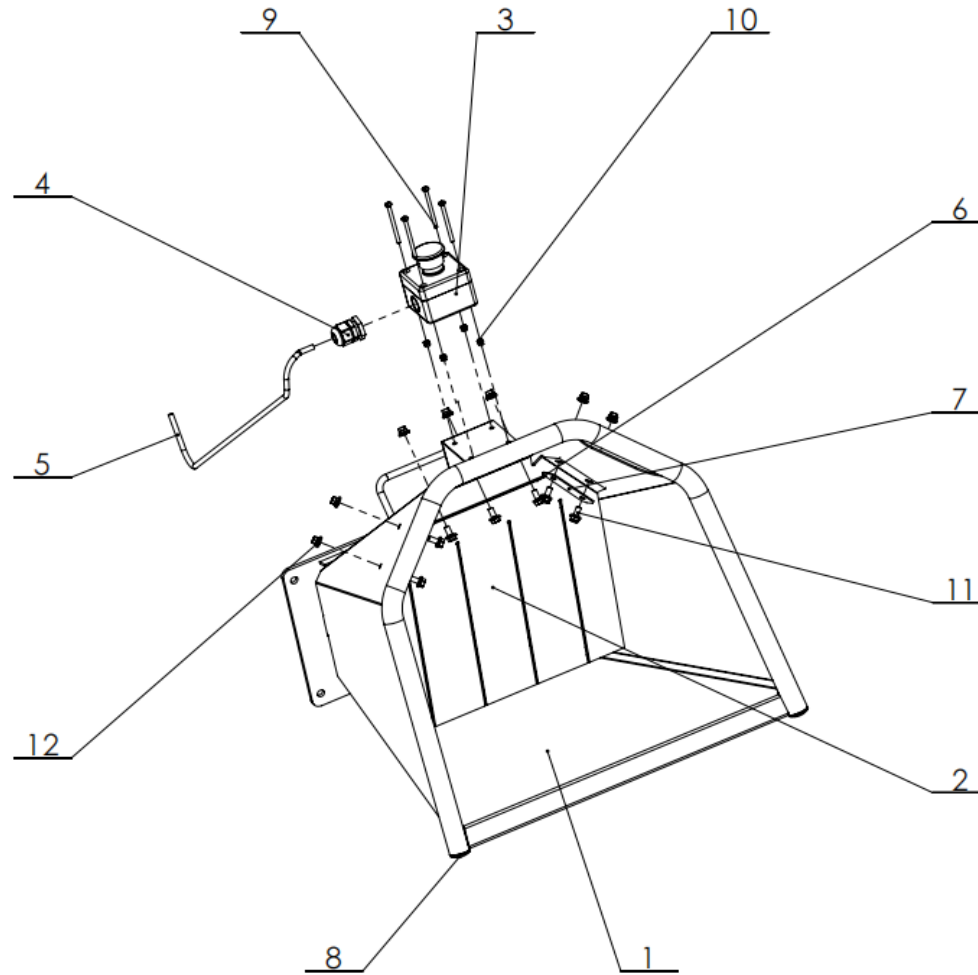
3	2710700009-0001	Fixed blade	1
4	2109200034-0001	Driven belt pulley	1
5	2713700009-0001	Moving blade	2
6	2607500023-0002	Cover	1
7	2140900009-0001	Bearing cover	1
8	360250039	Bolt M10×30	4
9	360660024	flat washer 10	10
10	361170004	Bearing [UCF] UCF206	2
11	360620011	spring washer 8	10
12	360010003	Nut M8	10
13	360660021	flat washer 8	10
14	360250147	Bolt M10×30,12.9 grade	6
15	360380087	Screw M10×25	2
16	360640013	big washer 10	2
17	360980050	Key 8×7×32	1
18	360590009	Special big washer 10	1
19	360620013	spring washer 10	11
20	360250038	Bolt M10×25	5

ROTI Walking wheel assy



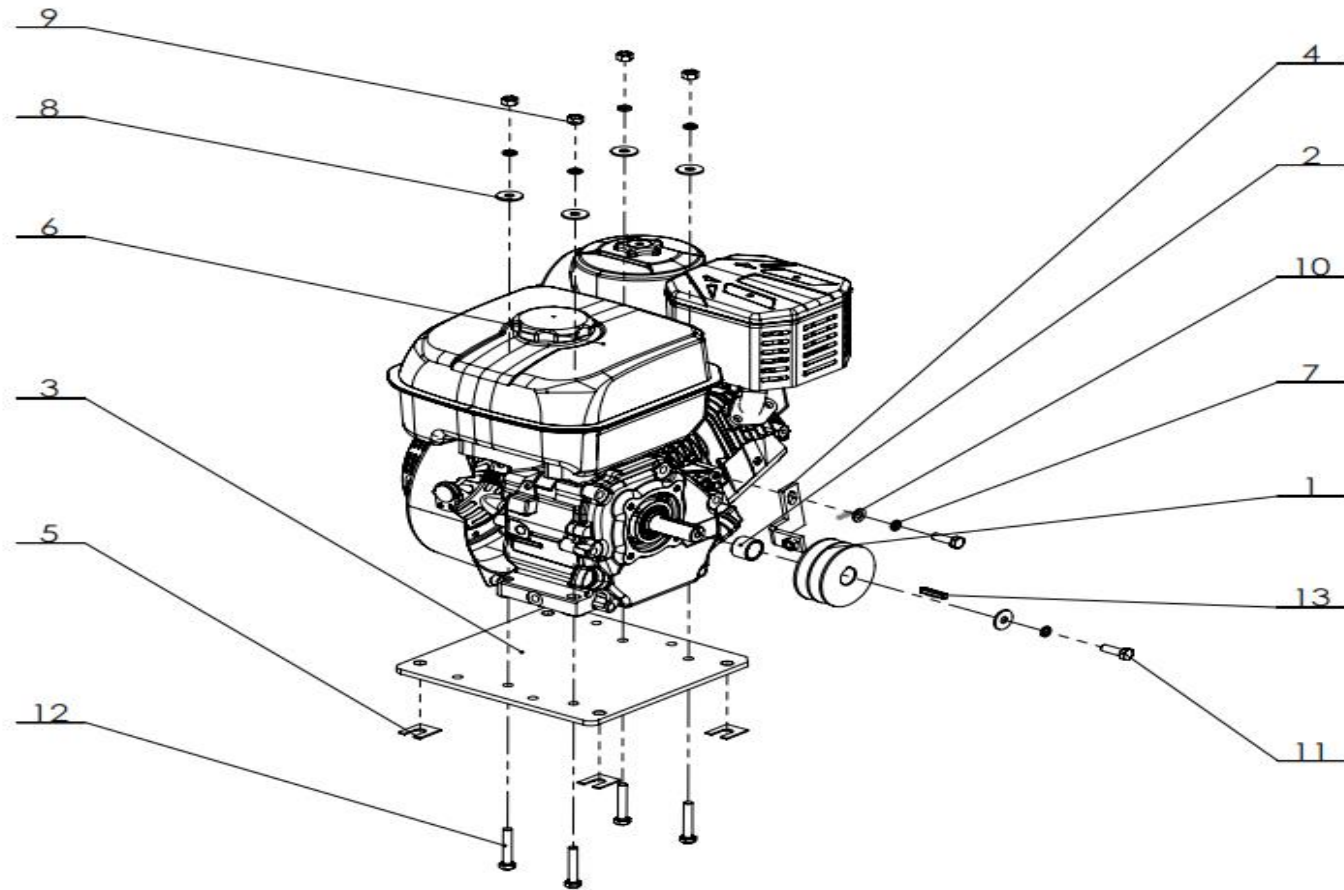
REF.NO.	COD COMANDA	DENUMIRE	CANTITATE NECESARA
1	2803200138-0001	Walking wheel assy	2
2	2801000040-0002	Wheel axle	1
3	2418400006-0002	Closing ring	2
4	3402200004-0001	Clip B	2
5	361020033	Pin 8×50	2
6	360640006	big washer 8	2
7	360620011	spring washer 8	2
8	360250055	Bolt M8×25	2

CUVA ALIMENTARE Feeder hopper assy



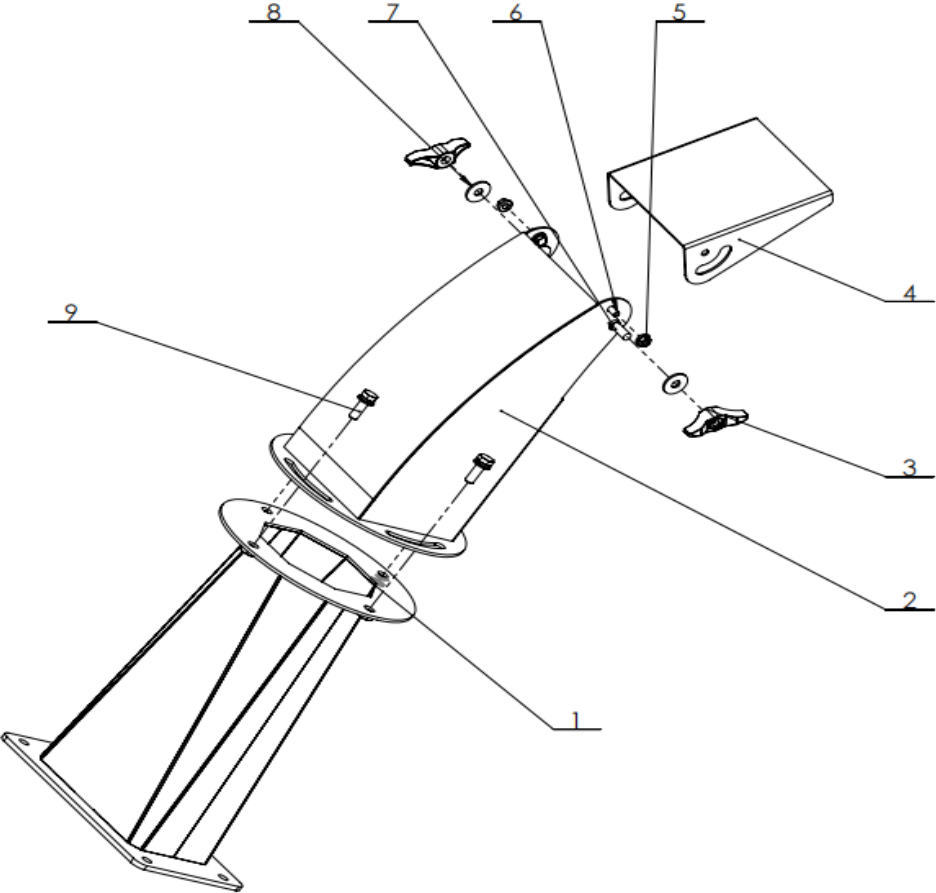
REF.NO.	COD COMANDA	DENUMIRE	CANTITATE NECESARA
1	2464600004-0001	Feeder hopper (CE)	1
2	2416500005-0001	Rubber fender	1
3	2211400003-0001	Emergency stop	1
4	2131500007-0001	water joint PG13.5	1
5	2208400013-0001	wire assy	1
6	2415200006-0002	fender layer(long)	1
7	2415200005-0002	fender layer(short)	2
8	2433600005-0001	handle plug	2
9	360410014	Screw M4×55	4
10	360120024	Nut M4	4
11	360250008	Bolt M6×12	7
12	360180012	Nut M6	7

SUPPORT MOTOR Engine



REF.NO.	COD COMANDA	DENUMIRE	CANTITATE NECESARA
1	2106600075-0001	Driving belt pulley	1
2	3410800215-0001	Bush 20.2x25x17.4	1
3	1602900005-0003	Bottom plate	1
4	2401800010-0003	Connection plate	1
5	3417000029-0002	Adjusting gasket	4
6	T010330426	170F/P-2 engine	1
7	360620011	standard washer 8	6
8	360640006	big washer 8	5
9	360010003	Nut M8	4
10	360660021	flat washer 8	1
11	360250055	Bolt M8x25	2
12	360250095	Bolt M8x45	4
13	360980068	Key 5x5x30	1

JGHEAB EVACOARE Rotating outlet hopper assy



REF.NO.	COD COMANDA	DENUMIRE	CANTITATE NECESARA
1	2464700001-0001	Outlet hopper base	1
2	2464800001-0001	Rotating outlet hopper	1
3	3008000001-0001	Handle locking lever	2
4	2456700006-0001	Rotating outlet hopper dam-board	1
5	360180012	Nut M6	2
6	360250008	Bolt M6×12	2
7	360360005	Bolt M8×25	2
8	360640006	big washer 8	2
9	361250007	bolt, spring washer and flat washer assemblies M8×25	4